

19	Suporte dos cilindros de GNV	1
18	Válvula do cilindro GNV	3
17	Válvula de abastecimento	1
16	Manômetro de alta pressão	1
15	Dispositivo regulador de pressão	1
14	Manômetro de baixa pressão	1
13	Filtro de baixa pressão	1
12	Cilindros de GNV	3
11	Pack de baterias	1
10	Tanque de combustível	2
9	Eixo auxiliar	1
8	Eixo de transmissão 2	1
7	Eixo Regenerativo	1
6	Eixo de transmissão 1	1
5	Torque coupler	1
4	Motor elétrico	1
3	Acoplamento	1
2	Caixa de transmissão	1
1	Motor a combustão	1
Nº	NOME	QTDE

This drawing is our property.  
It can't be reproduced  
or communicated without  
our written agreement.



DRAWING TITLE

DRAWN BY

Mateus

DATE

29/09/2020

MATERIAL

QTY

N.A.

SURFACE TREATMENT

N.A.

LISTA DE PEÇAS

SIZE

A3

DRAWING NUMBER

001

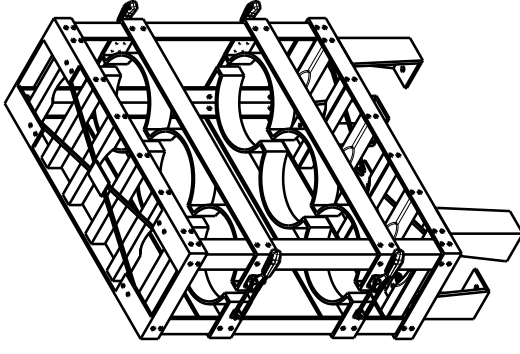
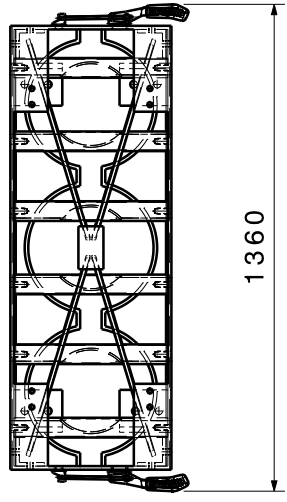
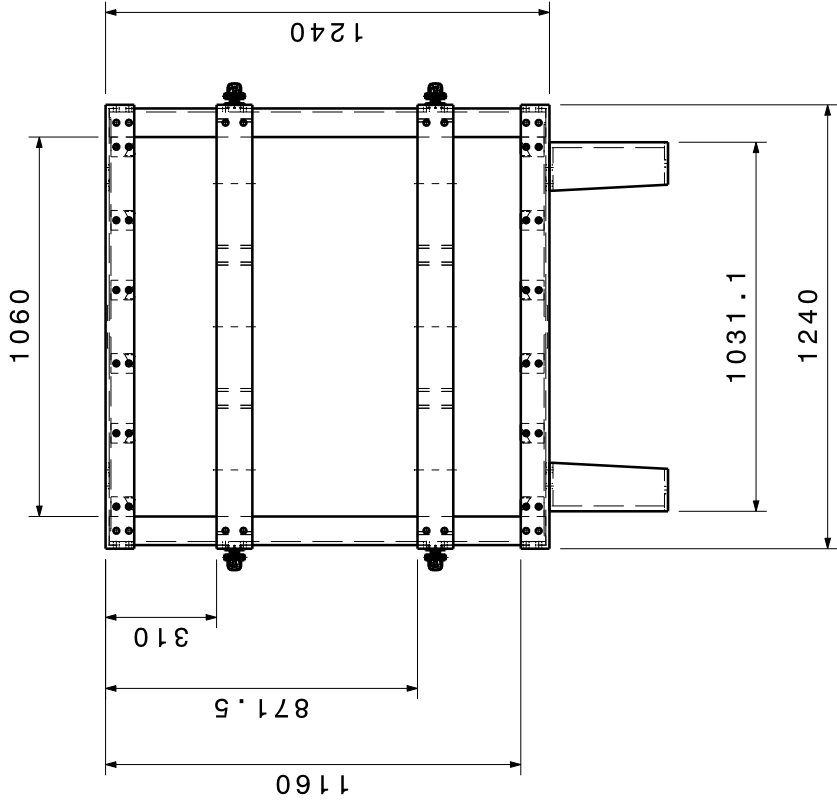
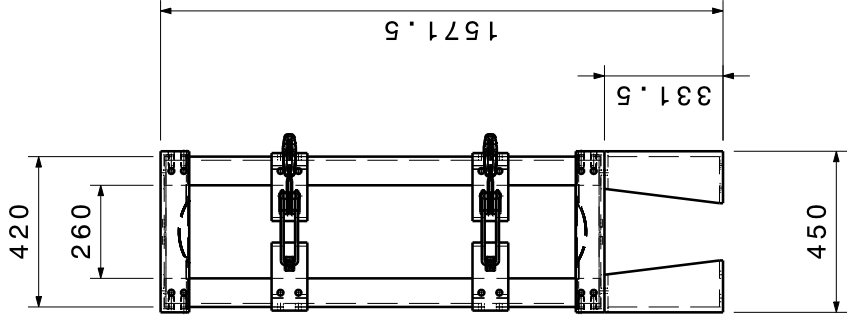
REV

1

SCALE 1:25

WEIGHT (kg) 8.500

SHEET 1/1



Hibritus

This drawing is our property.  
It can't be reproduced  
or communicated without  
our written agreement.

DRAWN BY	DATE
Mateus	21/11/2020
MATERIAL	QTY
SAE 1045	1
SURFACE TREATMENT	
Oxidação negra	

DRAWING TITLE

Supporte dos cilindros de GNV

SIZE	DRAWING NUMBER	REV
A3	002	0

SCALE	1:15	WEIGHT (kg)	415,8	SHEET	1/1
-------	------	-------------	-------	-------	-----

A B

H G

4

3

2

1

4

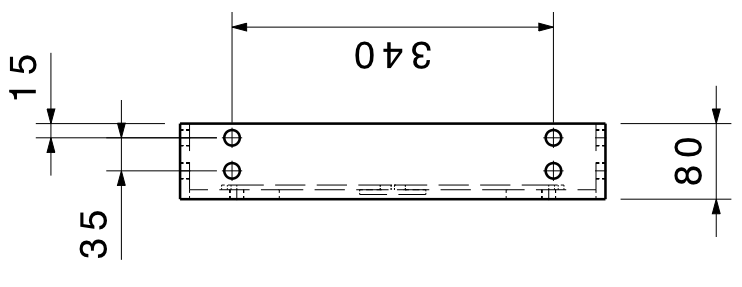
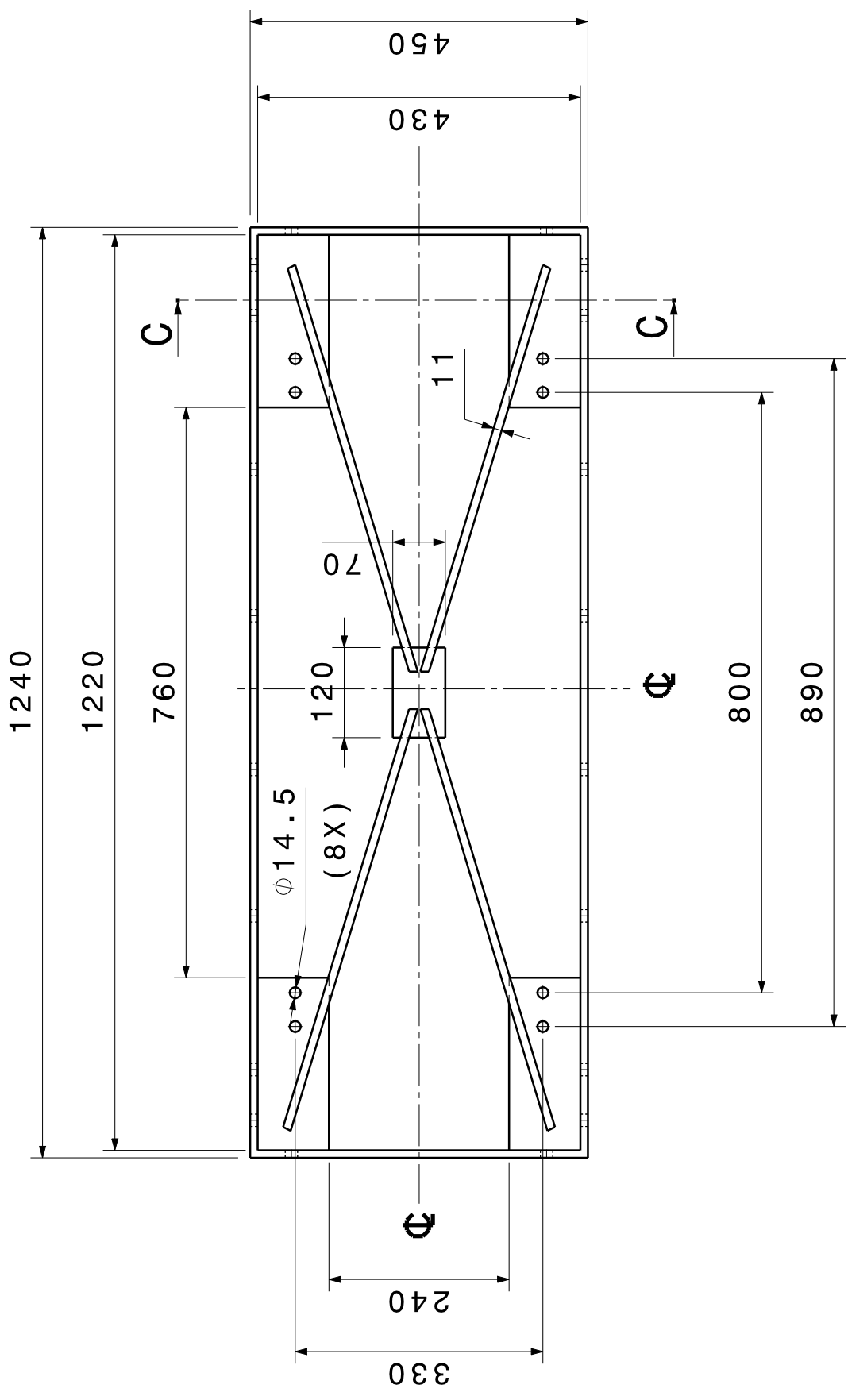
3

2

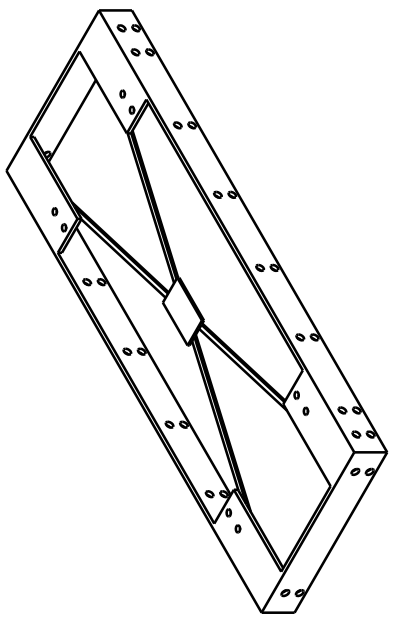
1

A B C D E F G H

4 3 2 1

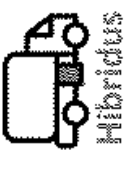
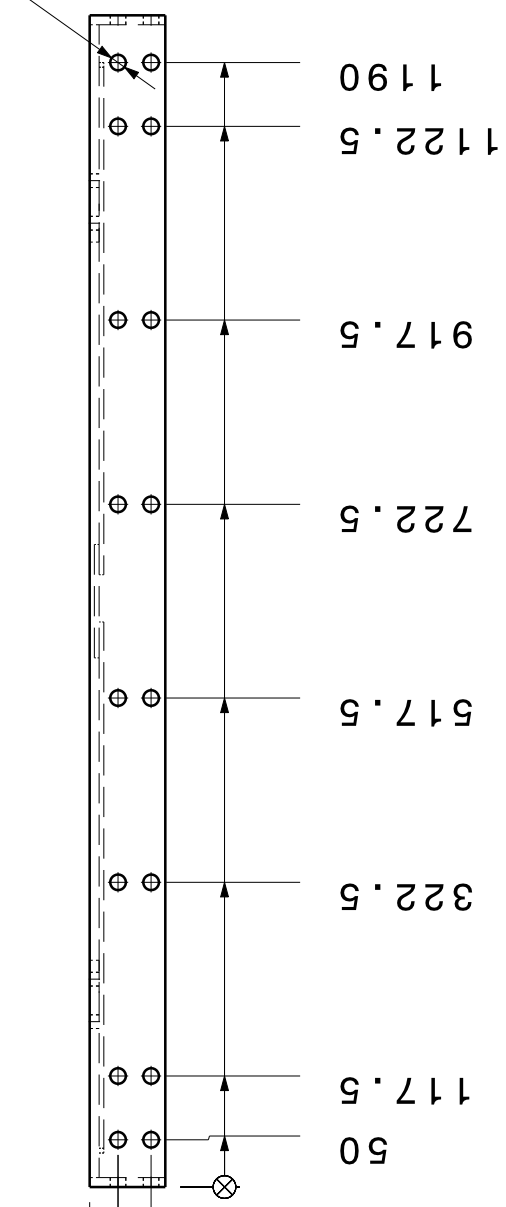


Section view C-C



**CHANFRAR CANTOS VIVOS COM 0,5X45°**

Φ 16.5  
(40X)



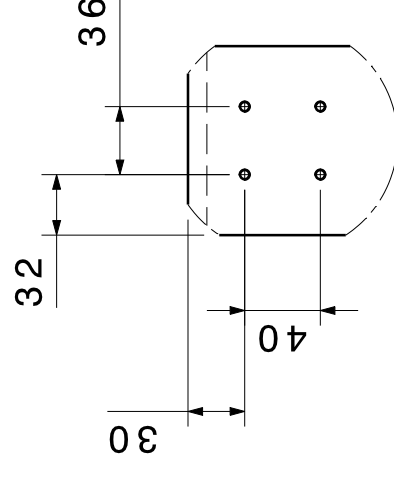
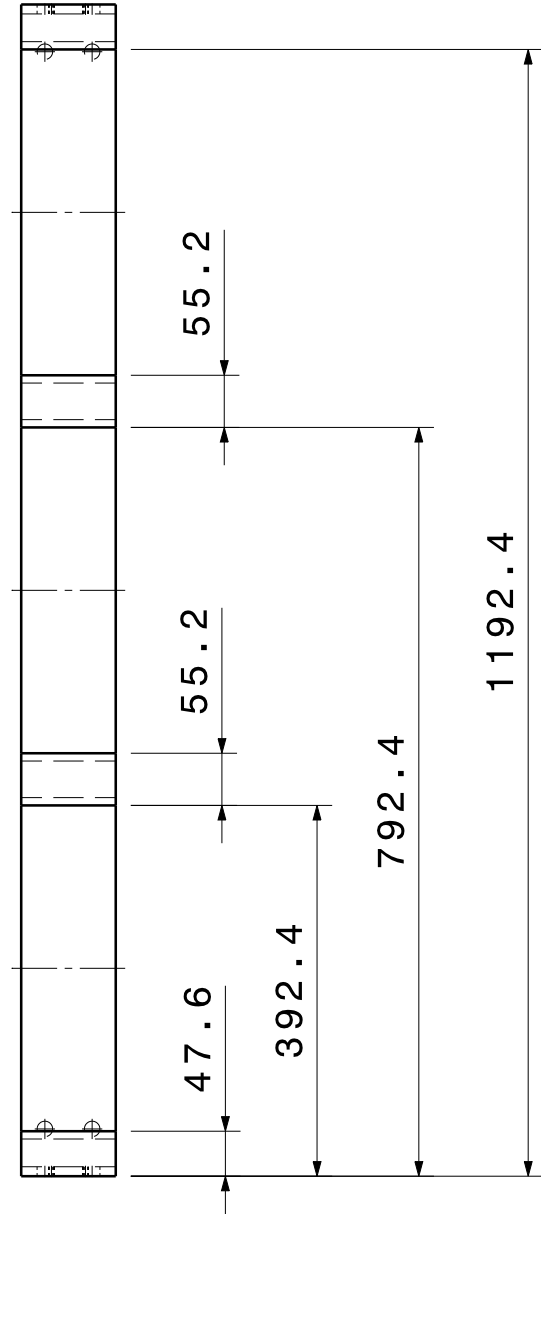
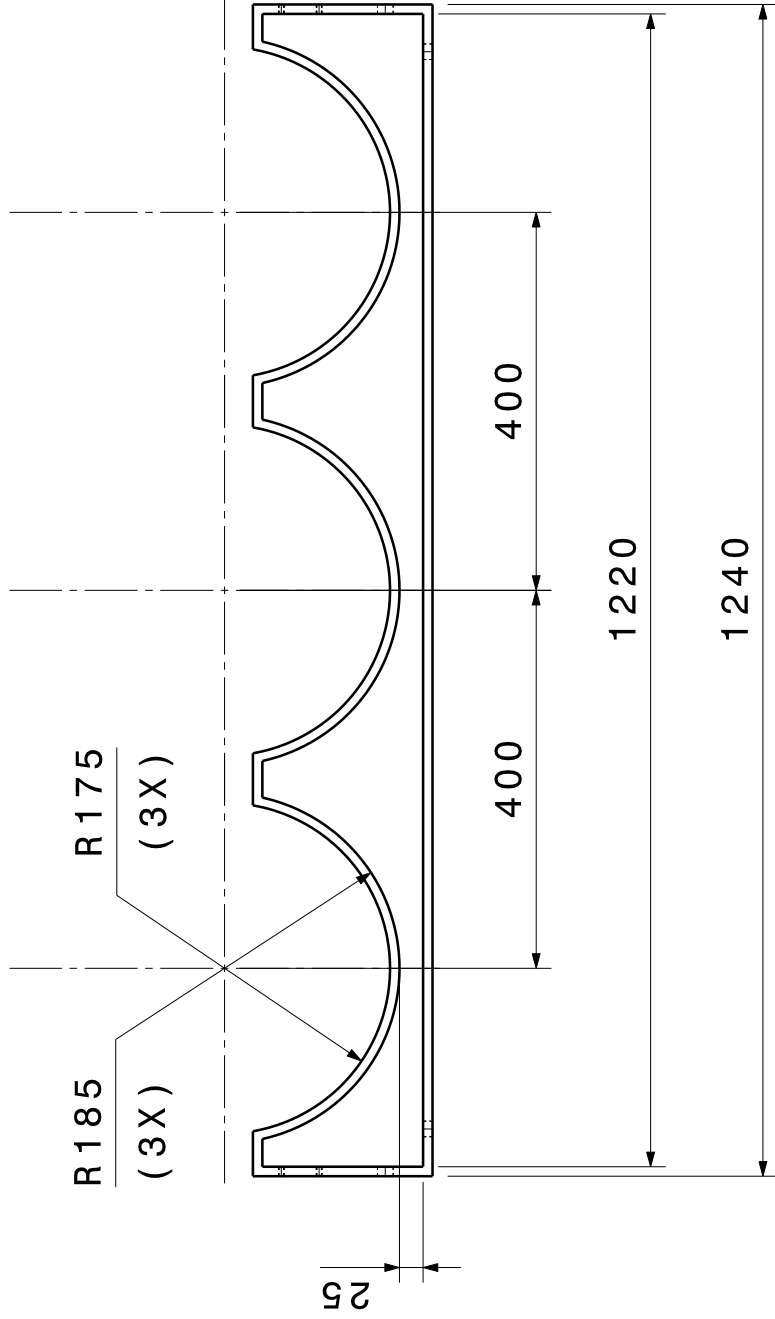
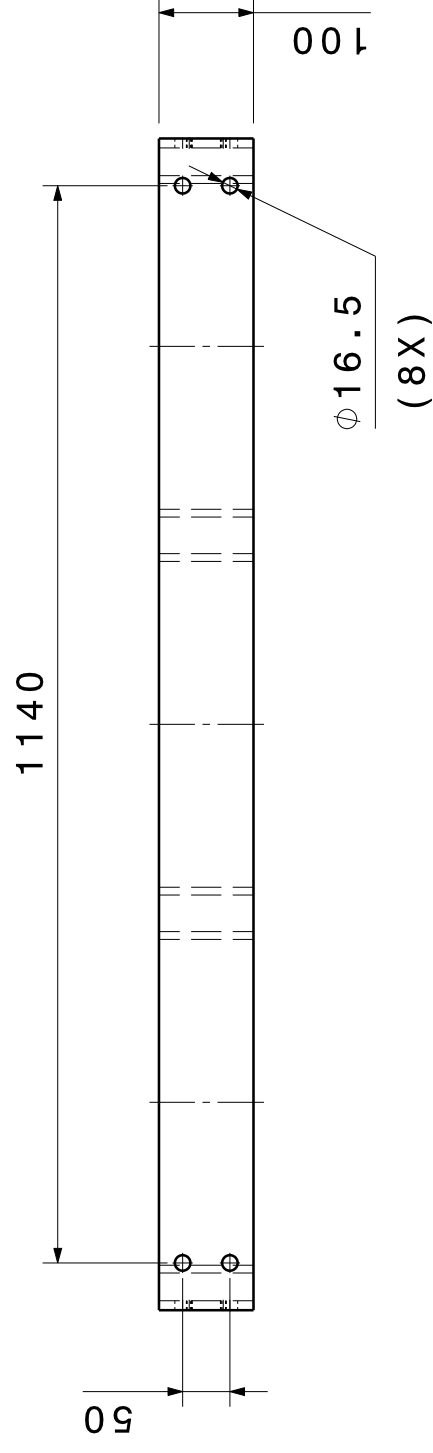
This drawing is our property.  
It can't be reproduced  
or communicated without  
our written agreement.

DRAWING TITLE

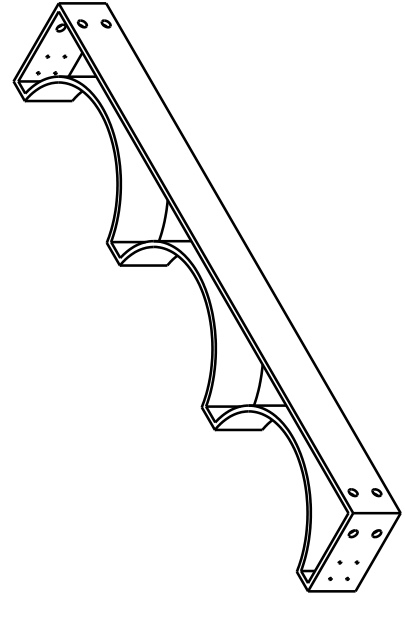
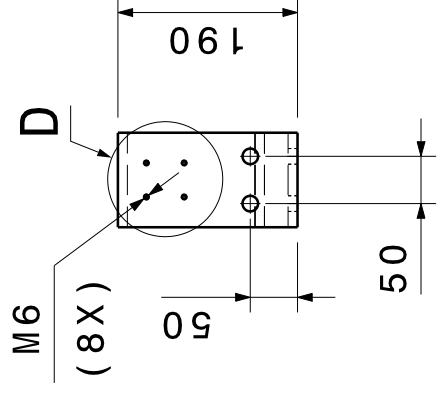
DRAWN BY	DATE	DRAWING NUMBER	
Mateus	21/11/2020	Estrutura 1	
MATERIAL	QTY	SIZE	REV
SAE 1045	2	A3	003
SURFACE TREATMENT		SCALE	1/1
Oxidação negra		1:8	28,42
		WEIGHT (kg)	0
		SHEET	1/1

A B C D E F G H

4 3 2 1

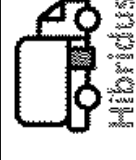


Detail D



**CHANFRAR CANTOS VIVOS COM 0,5X45° .**

This drawing is our property.  
It can't be reproduced  
or communicated without  
our written agreement.

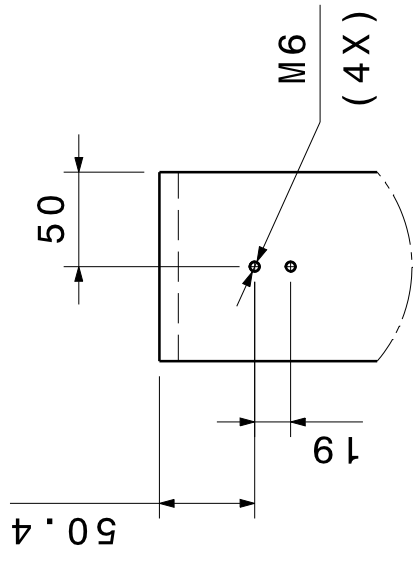


DRAWING TITLE

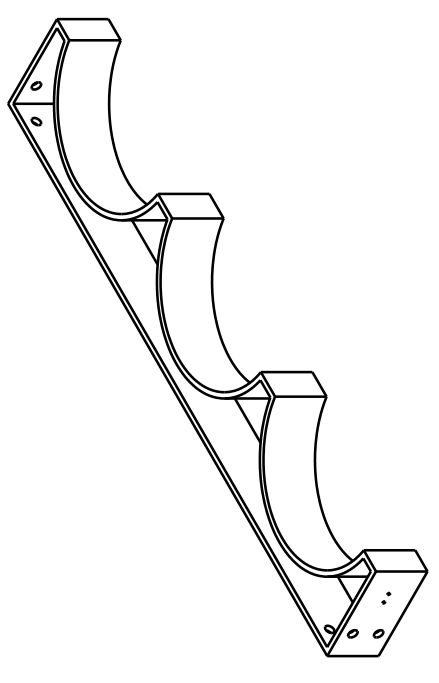
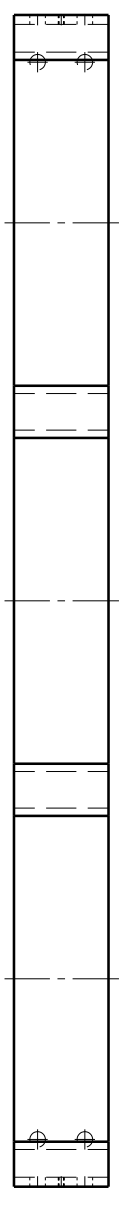
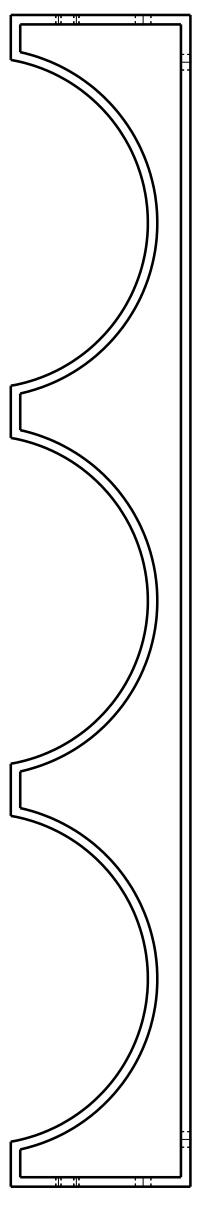
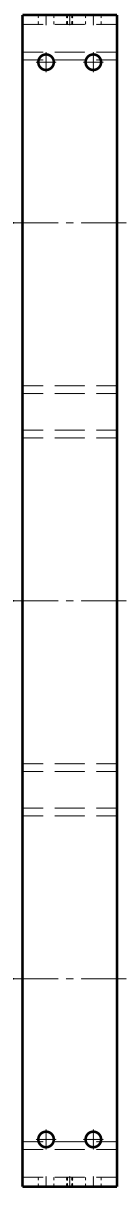
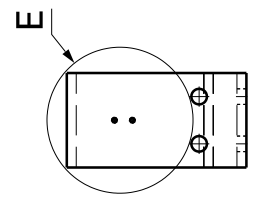
DRAWN BY	DATE	DRAWING NUMBER		REV
Mateus	21/11/2020	Estrutura 2		0
MATERIAL	QTY	SIZE	DRAWING NUMBER	REV
SAE 1045	2	A3	004	0
SURFACE TREATMENT		SCALE	1:8	WEIGHT (kg)
Oxidação negra		25,37	SHEET	1/1

A B C D E F G H

4 3 2 1 4

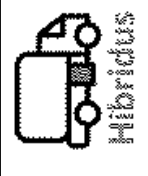


Detail E



**CHANFRAR CANTOS VIVOS COM 0,5X45°.**

Com excessão das cotas indicadas  
 nesse desenho, para a construção  
 dessa peça utilizar dimensões  
 contidas no desenho 004  
 (Estrutura 2).



This drawing is our property.  
 It can't be reproduced  
 or communicated without  
 our written agreement.

DRAWING TITLE

DRAWN BY	DATE	DRAWING NUMBER	
Mateus	21/11/2020	Estrutura 3	
MATERIAL	QTY	SIZE	REV
SAE 1045	2	A3	005
SURFACE TREATMENT		SCALE	1:8
Oxidação negra		WEIGHT (kg)	25,37
		SHEET	1/1

H G B A

4

3

2

1

A

B

C

D

E

F

G

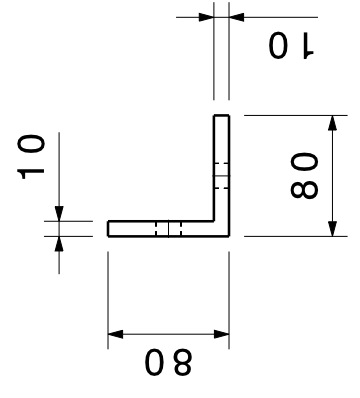
H

4

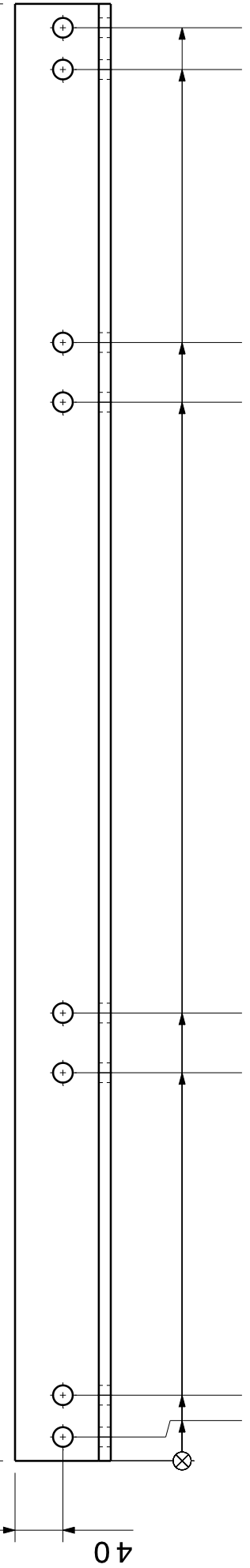
3

2

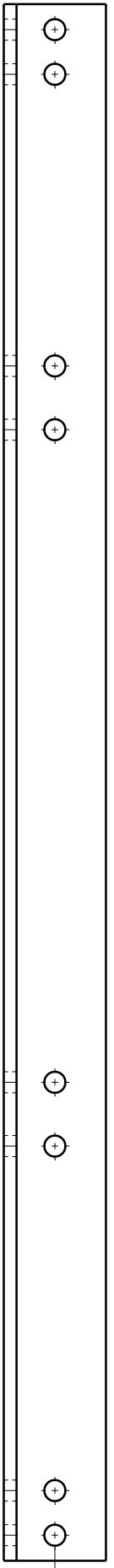
1



1220



5120  
5120  
325  
375  
886.5  
936.5  
1165  
1200



40

CHANFRAR CANTOS VIVOS COM 0,5X45°.



Hibridus

This drawing is our property.  
It can't be reproduced  
or communicated without  
our written agreement.

DRAWING TITLE

DRAWN BY

DATE

MATERIAL

SURFACE TREATMENT

Mateus

SAE 1045

Oxidação negra

QTY

4

DATE

21/11/2020

DRAWING TITLE

Estrutura 4

SIZE

DRAWING NUMBER

REV

0

SCALE

1:6

WEIGHT (kg)

14,12

SHEET

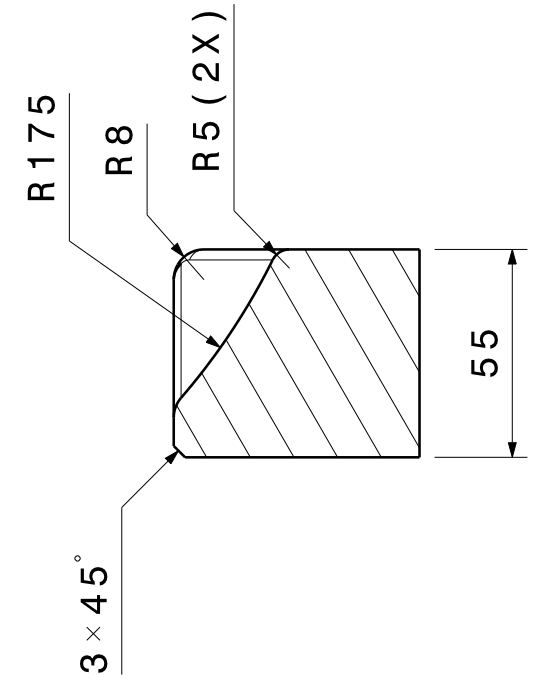
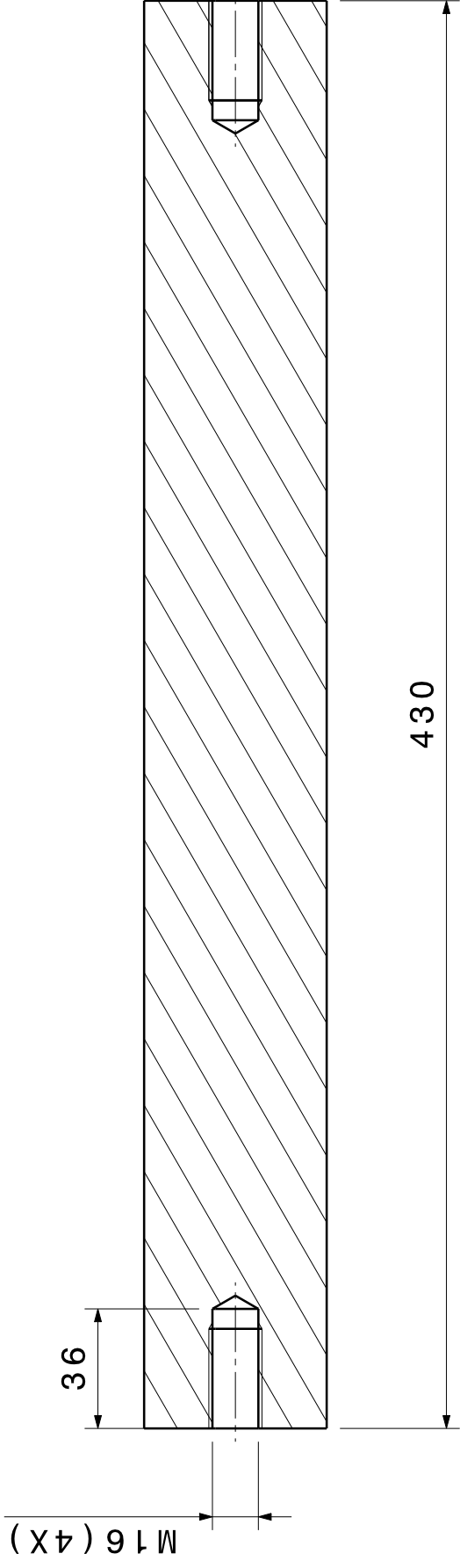
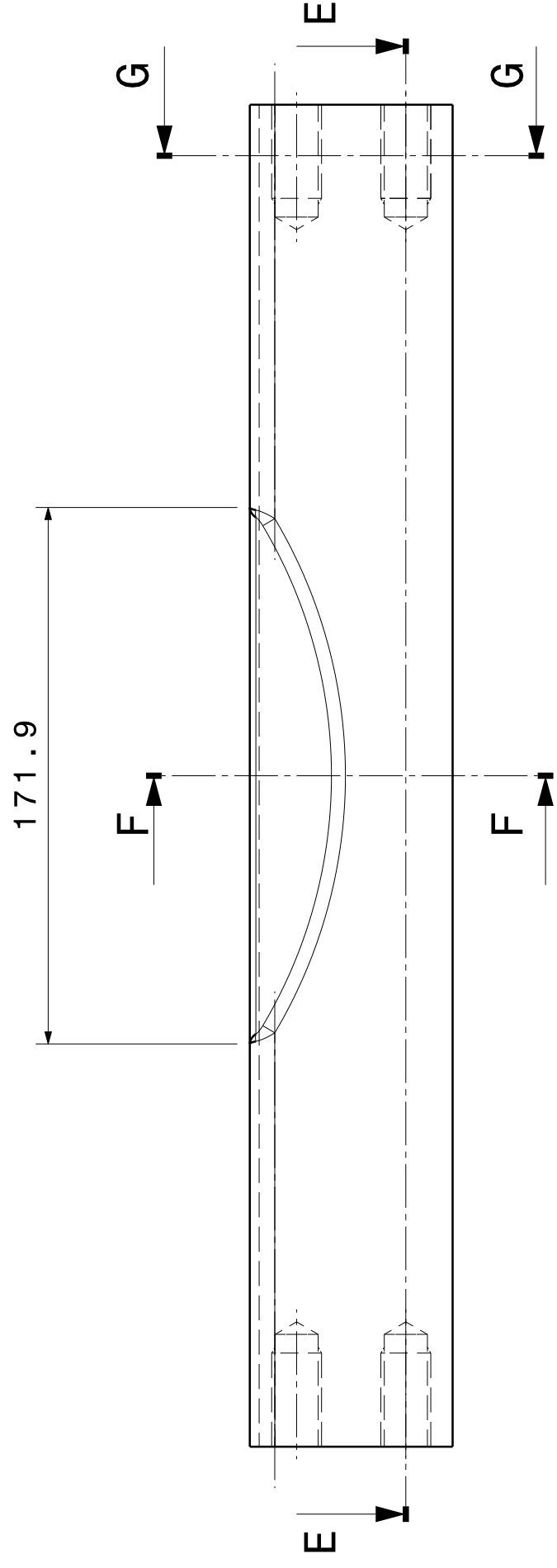
1/1

A

B

G

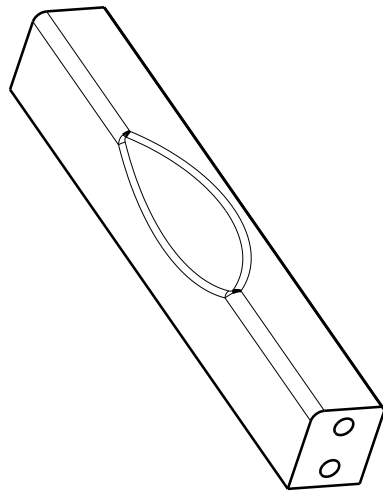
H



Section E-E

Section F-F

Section G-G



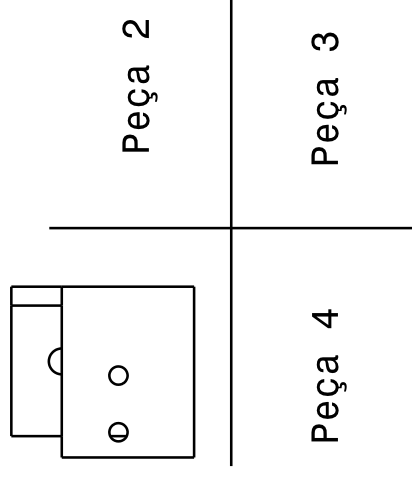
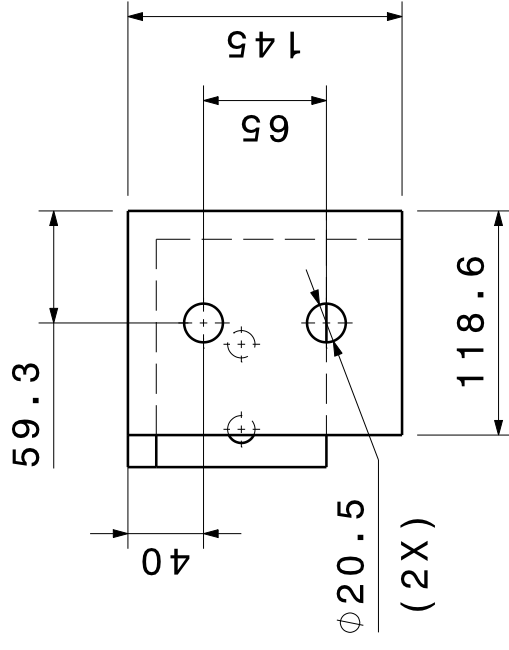
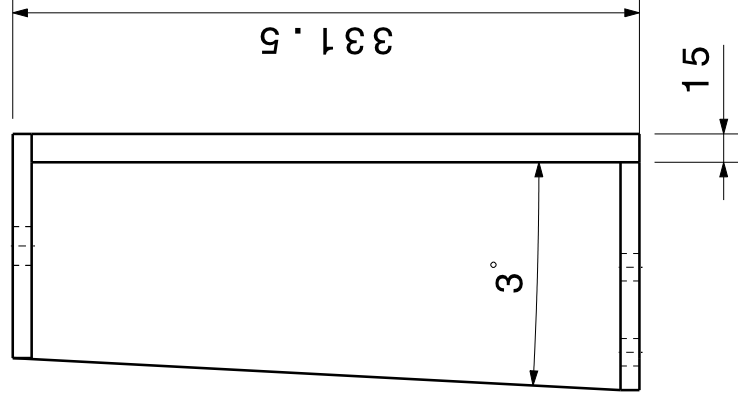
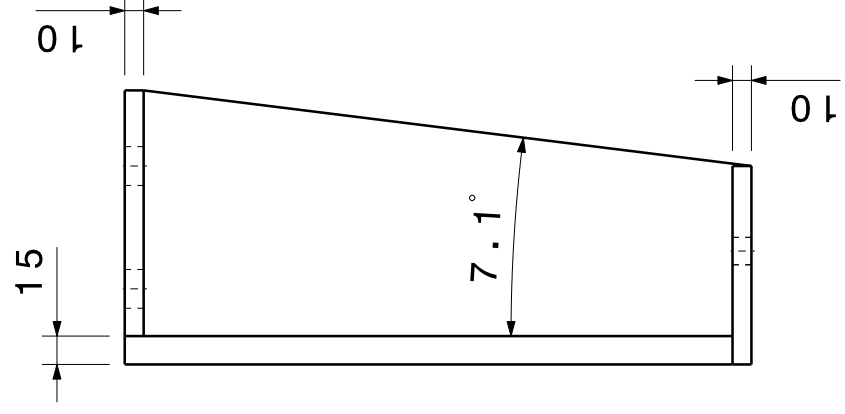
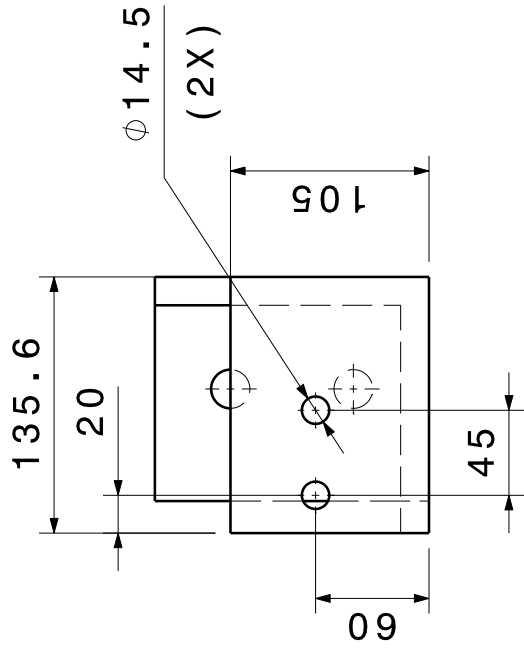
Usinar peça de acordo com o modelo 3D.

**CHANFRAR CANTOS VIVOS COM 0,5X45°.**

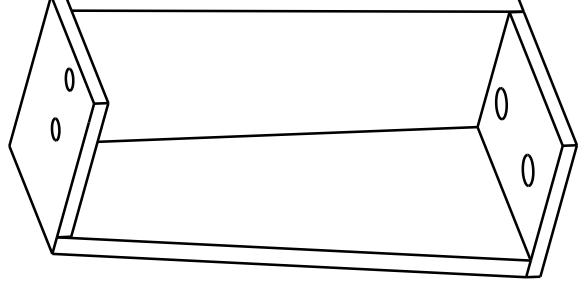


This drawing is our property. It can't be reproduced or communicated without our written agreement.

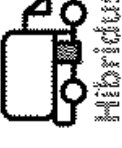
DRAWING TITLE		Estrutura 5	
DRAWN BY	DATE	SIZE	REV
Mateus	21/11/2020	A3	0
MATERIAL	QTY	DRAWING NUMBER	
SAE 1045	12	007	
SURFACE TREATMENT		SCALE	SHEET
Oxidação negra		1:3	1/1
		WEIGHT (kg)	
		11,37	



Fabricar peças 2, 3 e 4 conforme planos de simetria acima.



**CHANFRAR CANTOS VIVOS COM 0,5X45° .**



This drawing is our property. It can't be reproduced or communicated without our written agreement.

DRAWING TITLE

DRAWN BY	DATE	DRAWING NUMBER	
Mateus	21/11/2020	Estrutura 6	
MATERIAL	QTY	SIZE	REV
SAE 1045	4	A3	008
SURFACE TREATMENT		SCALE	1:4 WEIGHT(kg)
Oxidação negra		11,13	SHEET 1/1



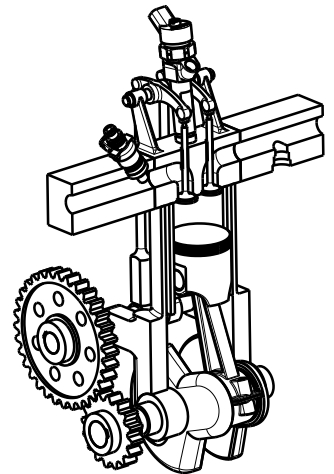
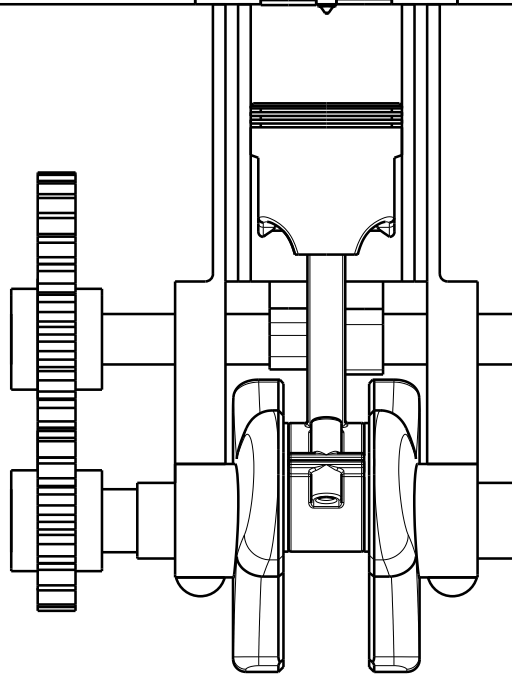
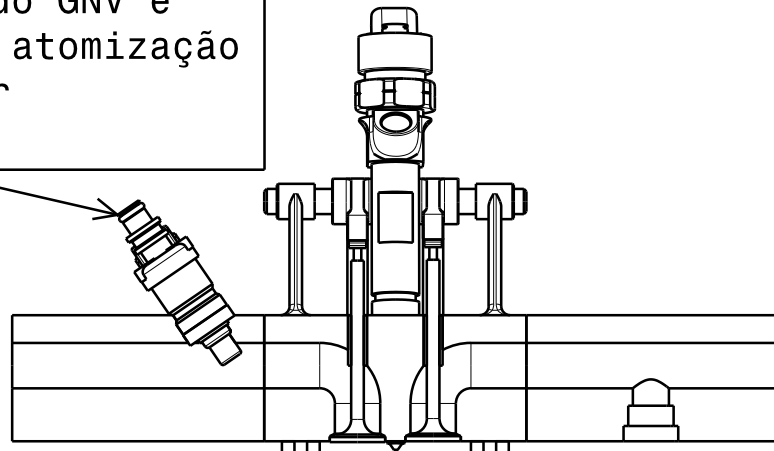
D

C

B

A

A eletroválvula injetora deve estar localizada o mais próximo possível do cabeçote e em uma posição que favoreça a pulverização do GNV e que otimize a atomização do mesmo no ar atmosférico.



4

4

3

3

2

2

This drawing is our property. It can't be reproduced or communicated without our written agreement.



DRAWING TITLE

Modelo representativo do motor

DRAWN BY  
Mateus

DATE  
27/11/2020

MATERIAL  
N.A.

QTY  
1

SIZE  
A4

DRAWING NUMBER

009

REV  
X

SURFACE TREATMENT  
N.A.

SCALE

1:3

WEIGHT (kg)

N.A.

SHEET

1/1

D

A

1

1