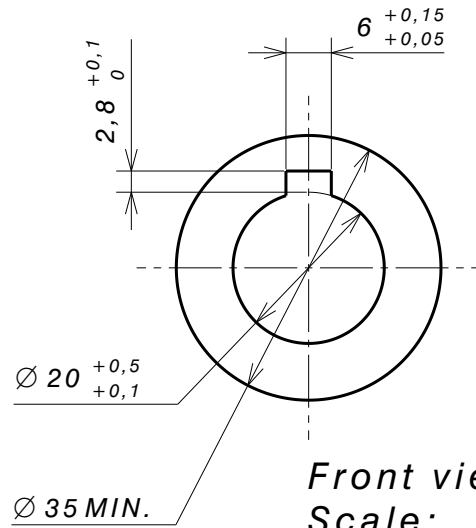
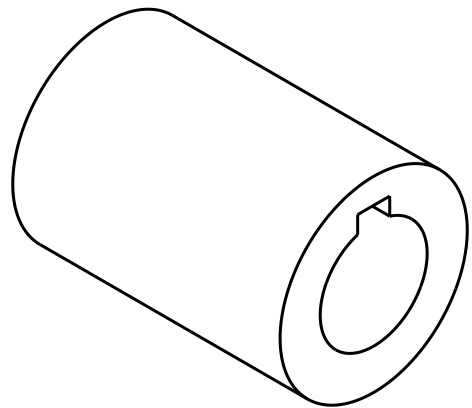


Right view  
Scale: 1:1


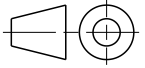
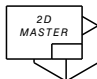


Front view  
Scale: 1:1



Isometric view  
Scale: 1:1

MATERIAL: ALUMÍNIO

001		ACOPLAMENTO		FEI40	16/APR/20	ARNALDO				
REV.	DESCRIPTION			DOCUMENT	DATE	APPROVER				
ALL MATERIALS COMPLIANT WITH END OF LIFE AND REACH/CLP REGULATIONS (EC N. 0053/2000, 1907/2006 AND 1272 / 2008). DOCUMENT FOLLOWING IMDS STANDARDS.				SPECIAL CHARACTERISTICS INDICATED IN THE DRAWING						
ALL RIGHTS RESERVED FOR BYKERS. THIS DRAWING SHALL NOT BE TOTALLY OR PARTIALLY REPRODUCED WITHOUT FORMAL AGREEMENT WITH THE INTELLECTUAL RIGHTS OF ITS OWNER.				NON REPRESENTATIVE TOLERANCES ARE REF. COTES			DESIGNED	ARSPIRIM		
				MASTER MODEL	CAD SYS.	CATIA V5		A4	APPROVED	ARNALDO
					LINEAR DIM.	"mm"			DATE	16/APR/20
					WEIGHT(g)	-	SHEET	1/1	REF. EI NUMBER	
					SCALE	1:1	REF. DRAWING	-		
TITLE							ITEM CODE	XXXXXXXXXX		
ACOPLAMENTO MOTOR EIXO										