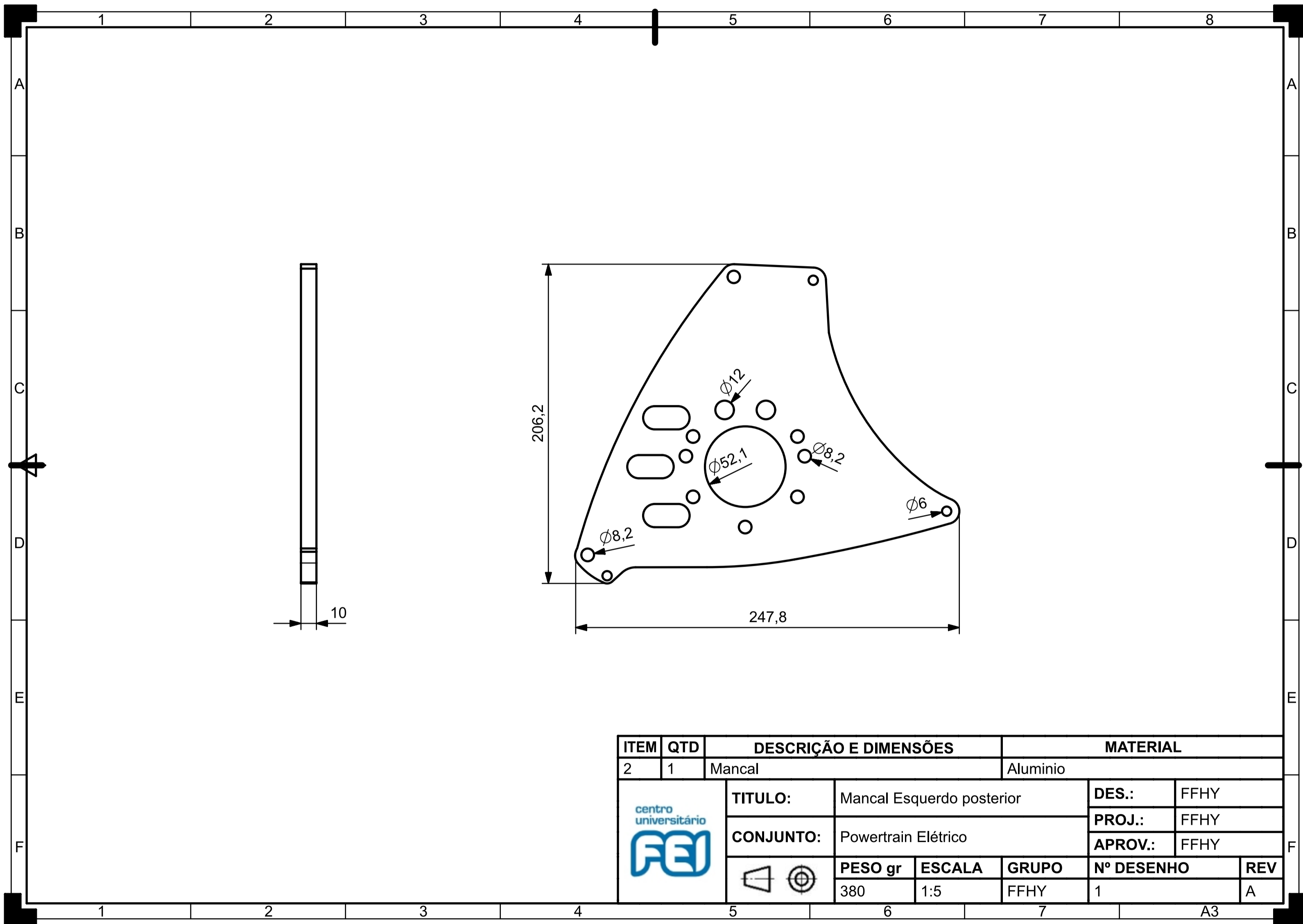
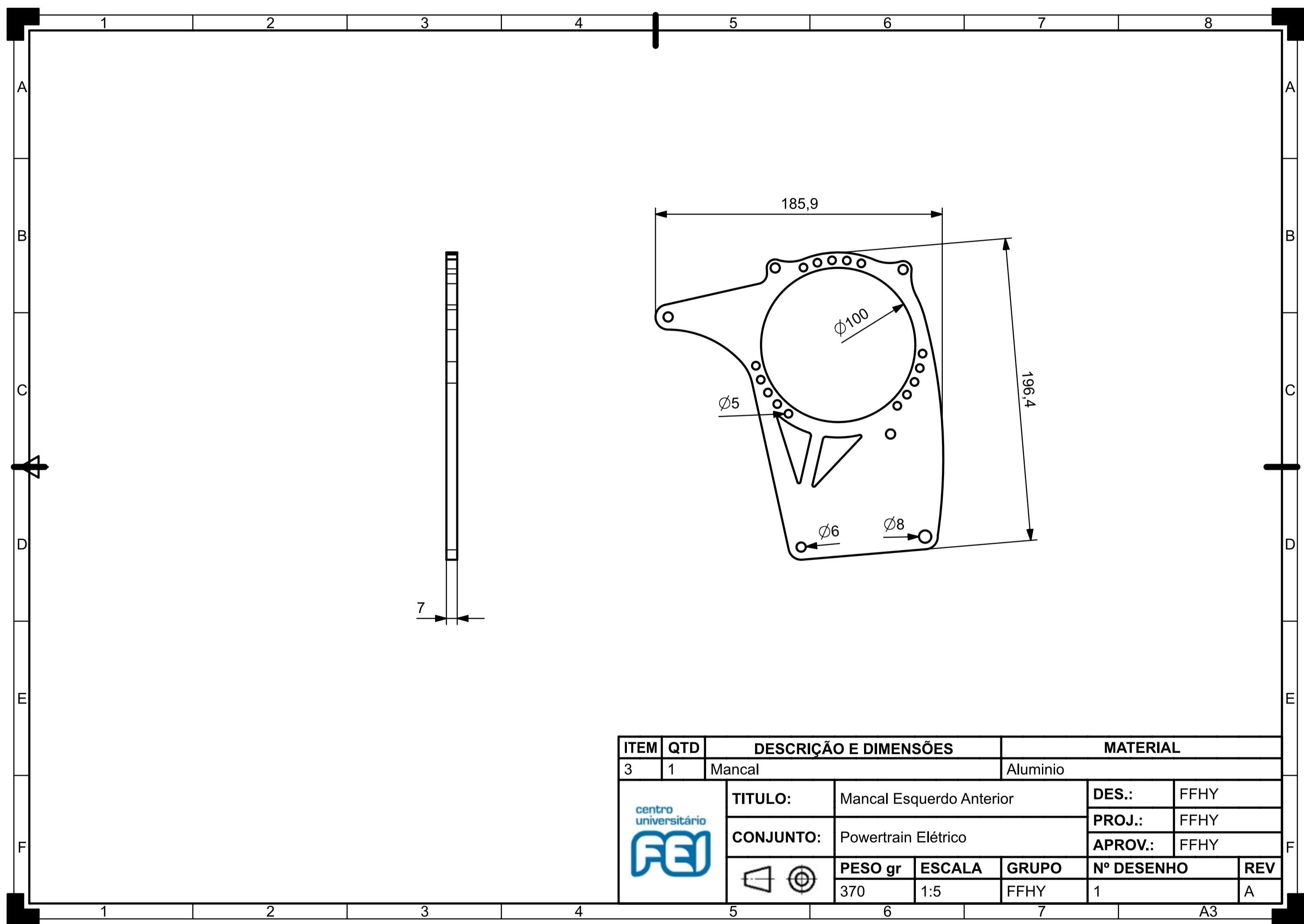


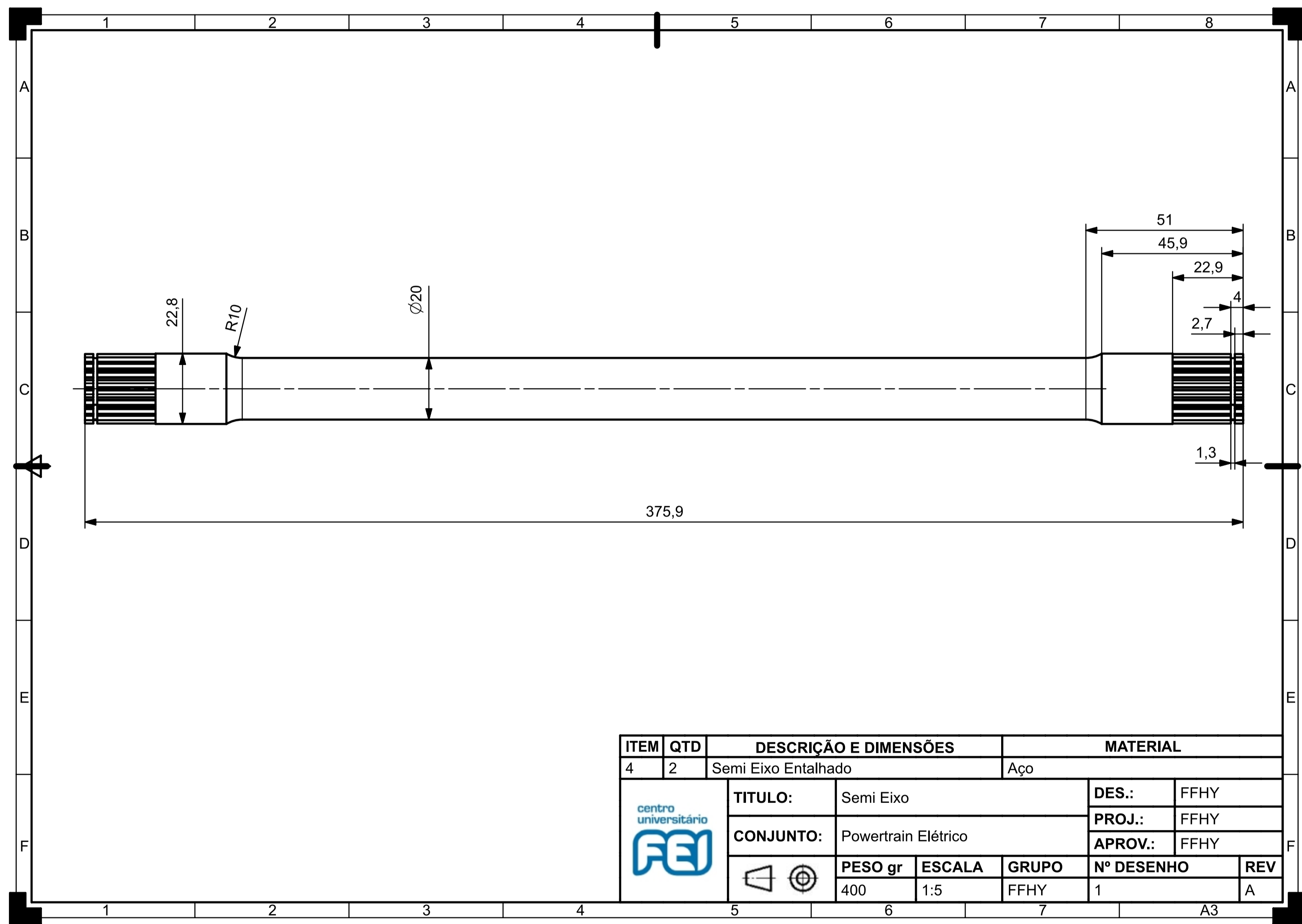
ITEM	QTD	DESCRIÇÃO E DIMENSÕES	MATERIAL				
1	1	Mancal	Aluminio				
	TITULO:		Mancal direito		DES.:	FFHY	
	CONJUNTO:		Powertrain Elétrico		PROJ.:	FFHY	
					APROV.:	FFHY	
			PESO gr	ESCALA	GRUPO	Nº DESENHO	REV
			500	1:5	FFHY	1	A



ITEM	QTD	DESCRIÇÃO E DIMENSÕES	MATERIAL				
2	1	Mancal	Aluminio				
	TITULO:		Mancal Esquerdo posterior		DES.:	FFHY	
	CONJUNTO:		Powertrain Elétrico		PROJ.:	FFHY	
					APROV.:	FFHY	
			PESO gr	ESCALA	GRUPO	Nº DESENHO	REV
			380	1:5	FFHY	1	A

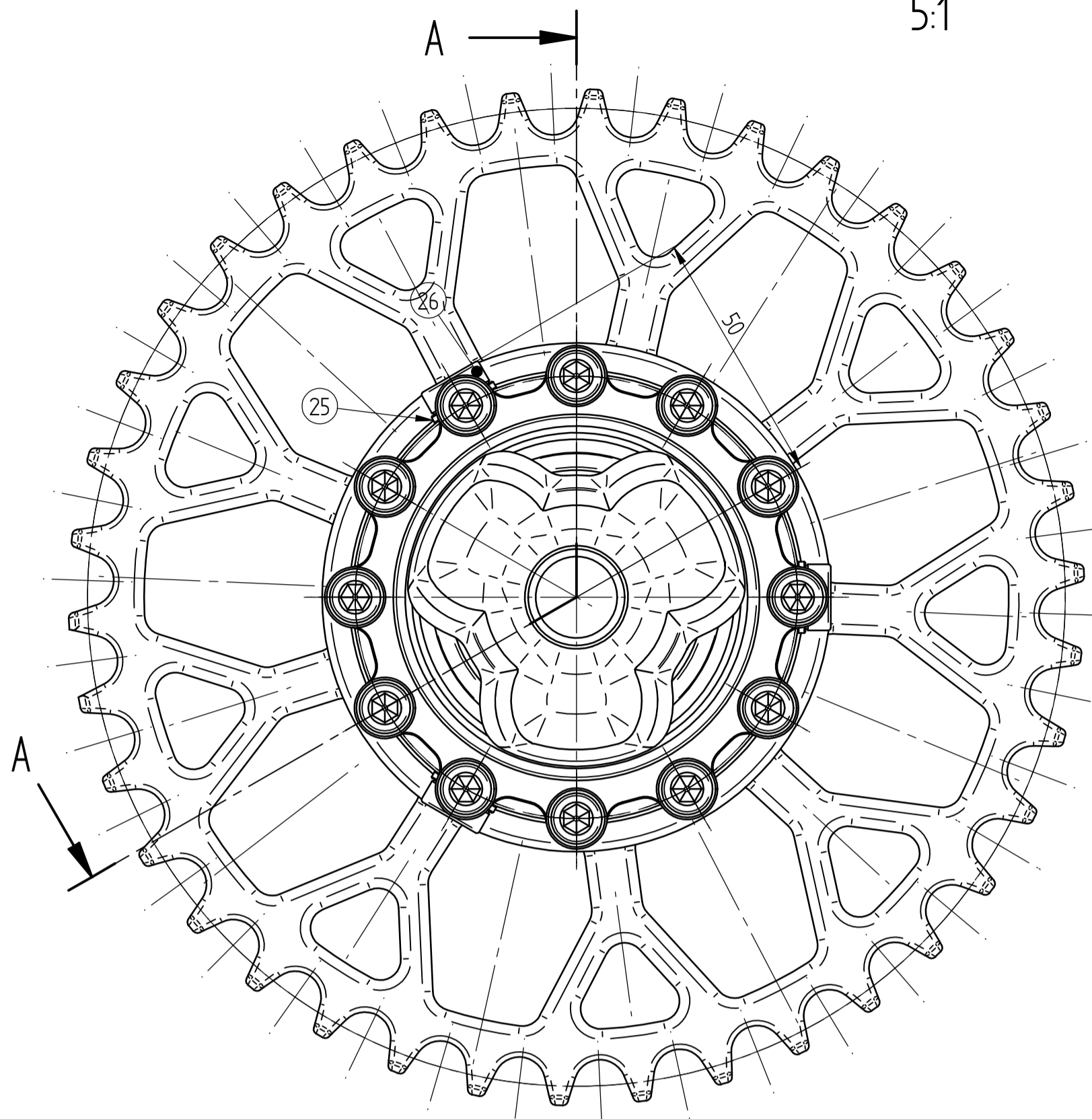
A3



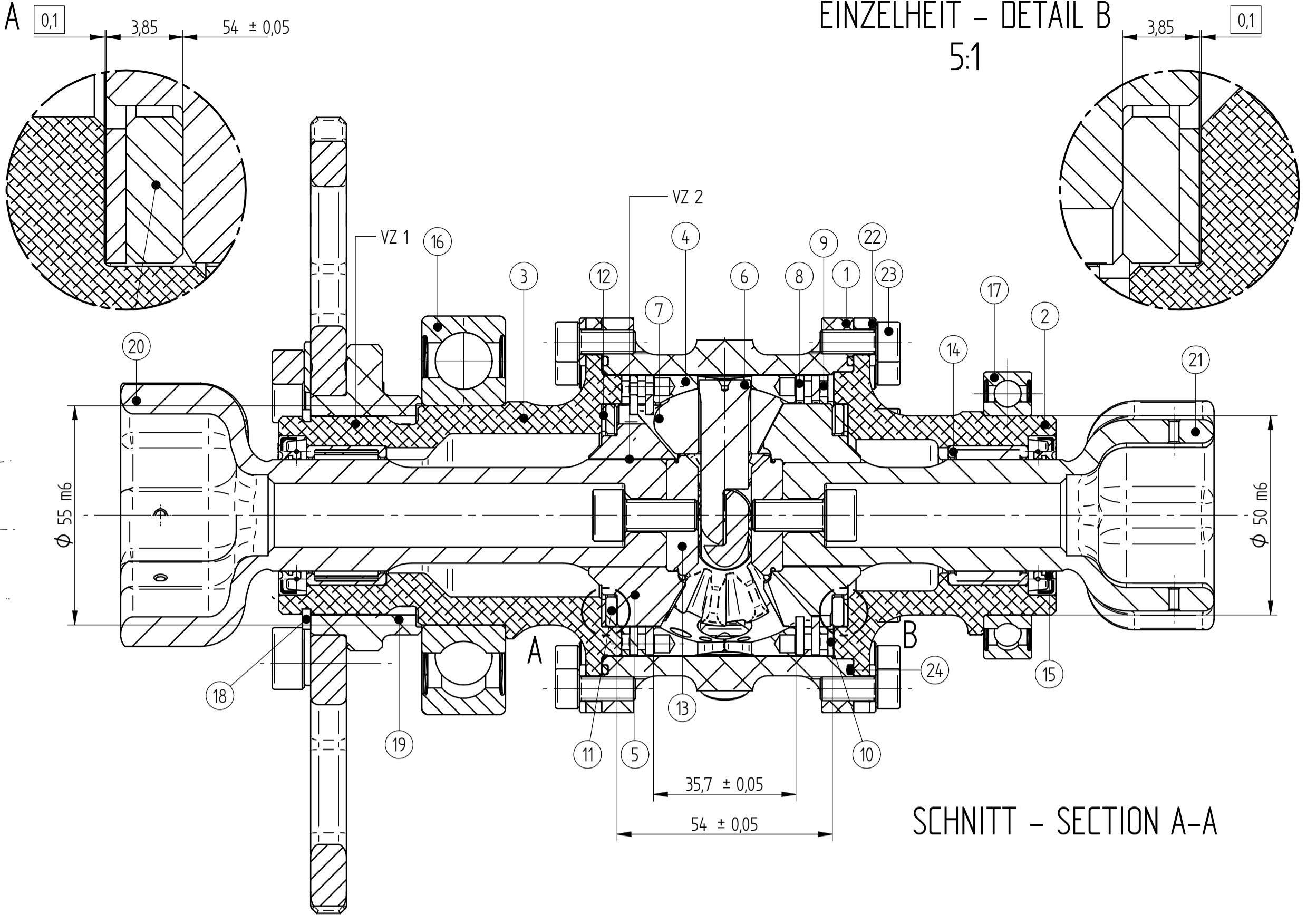




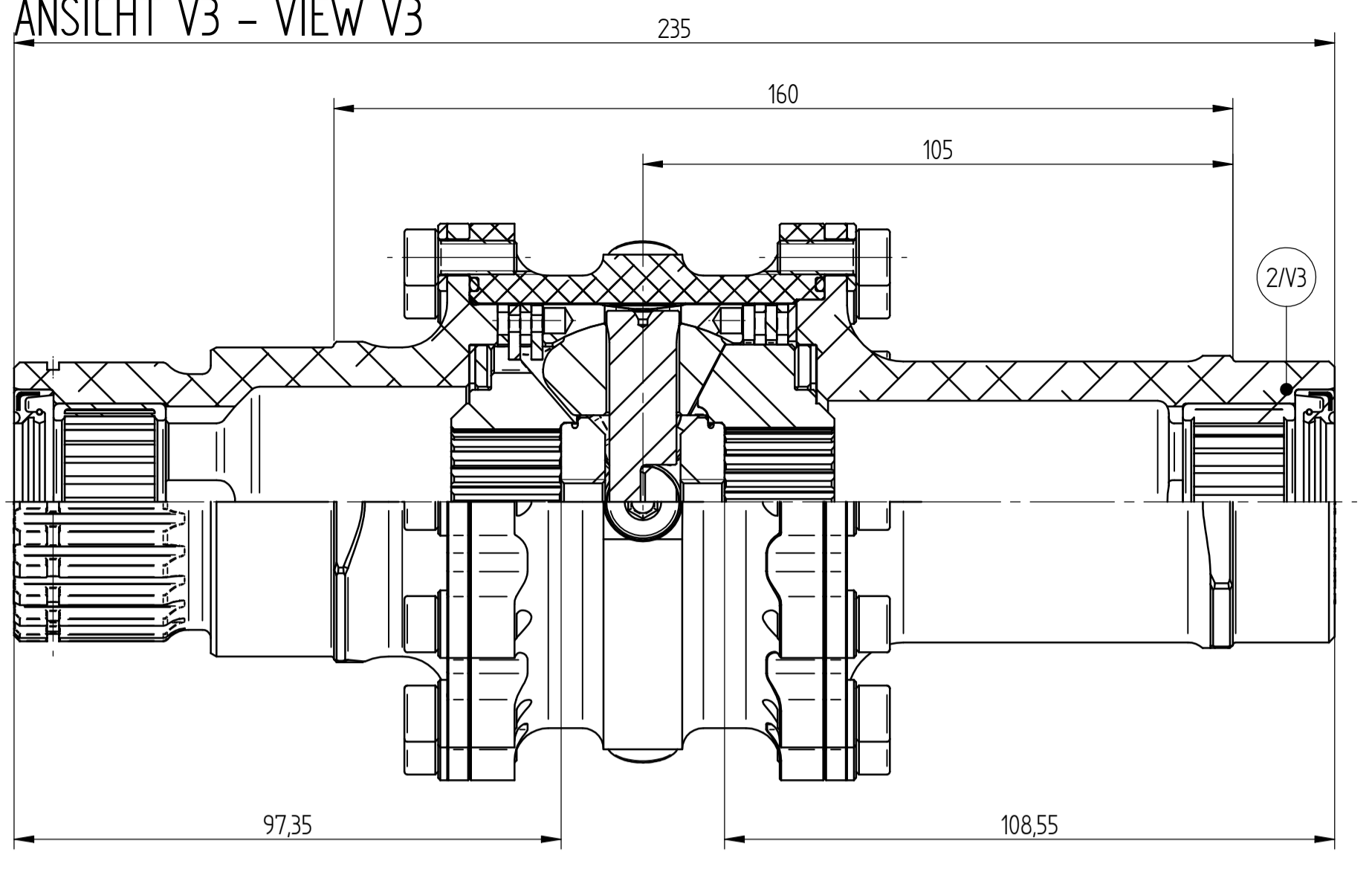
EINZELHEIT - DETAIL A  
5:1



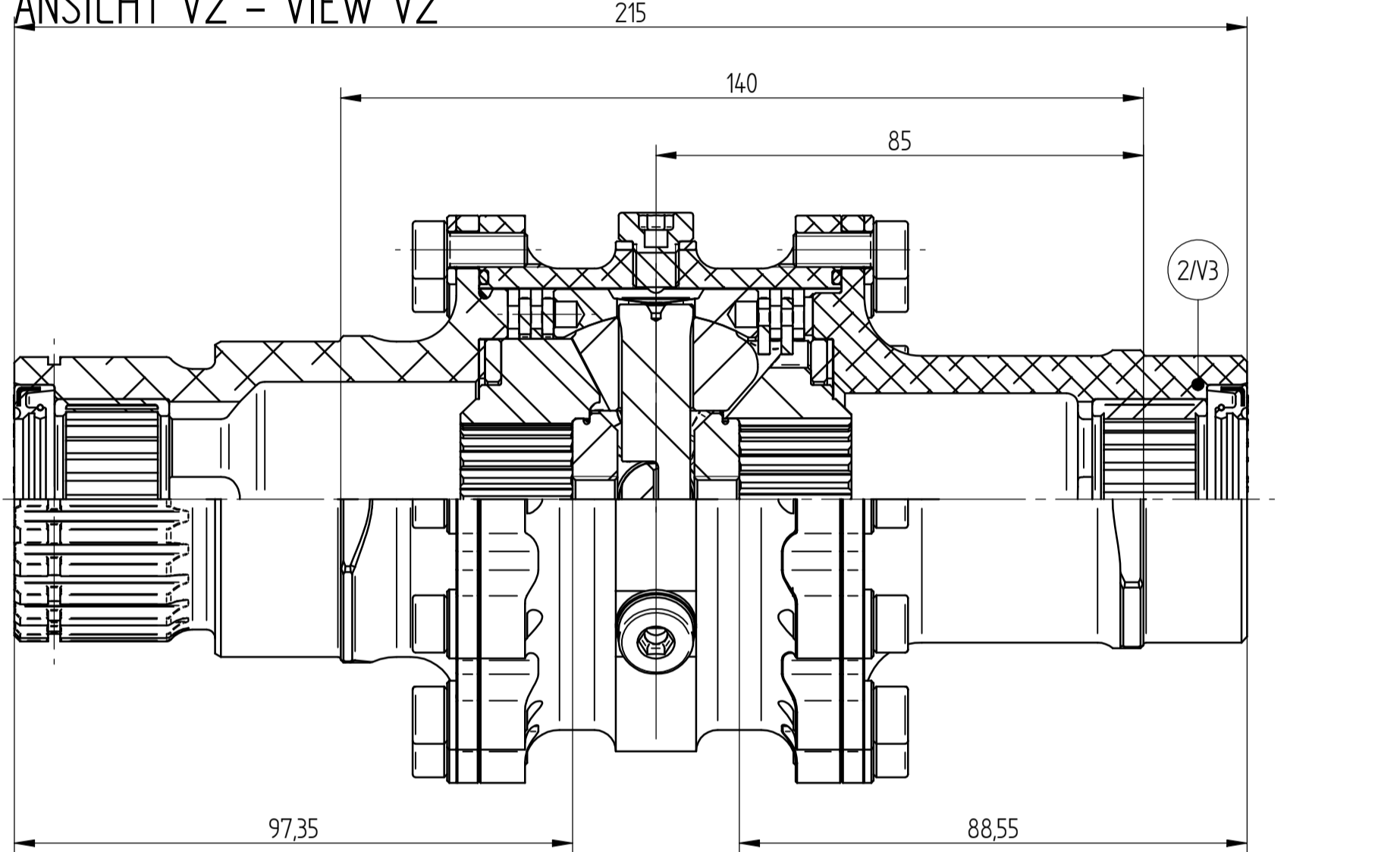
EINZELHEIT - DETAIL B  
5:1



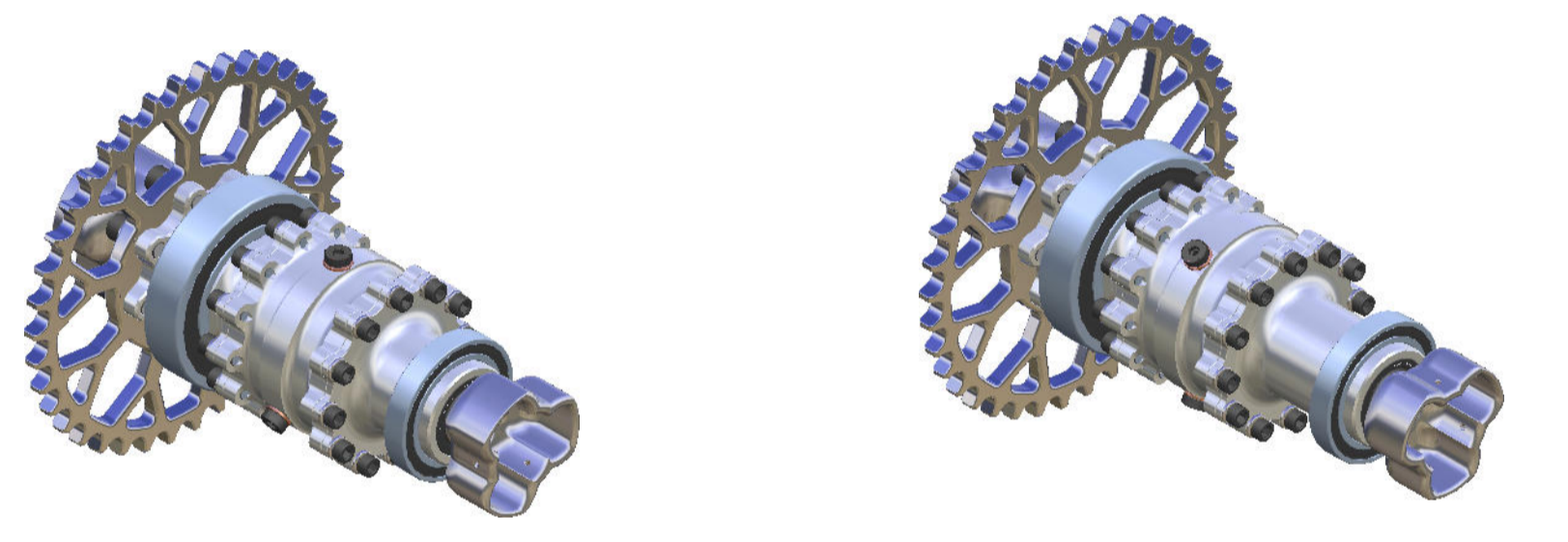
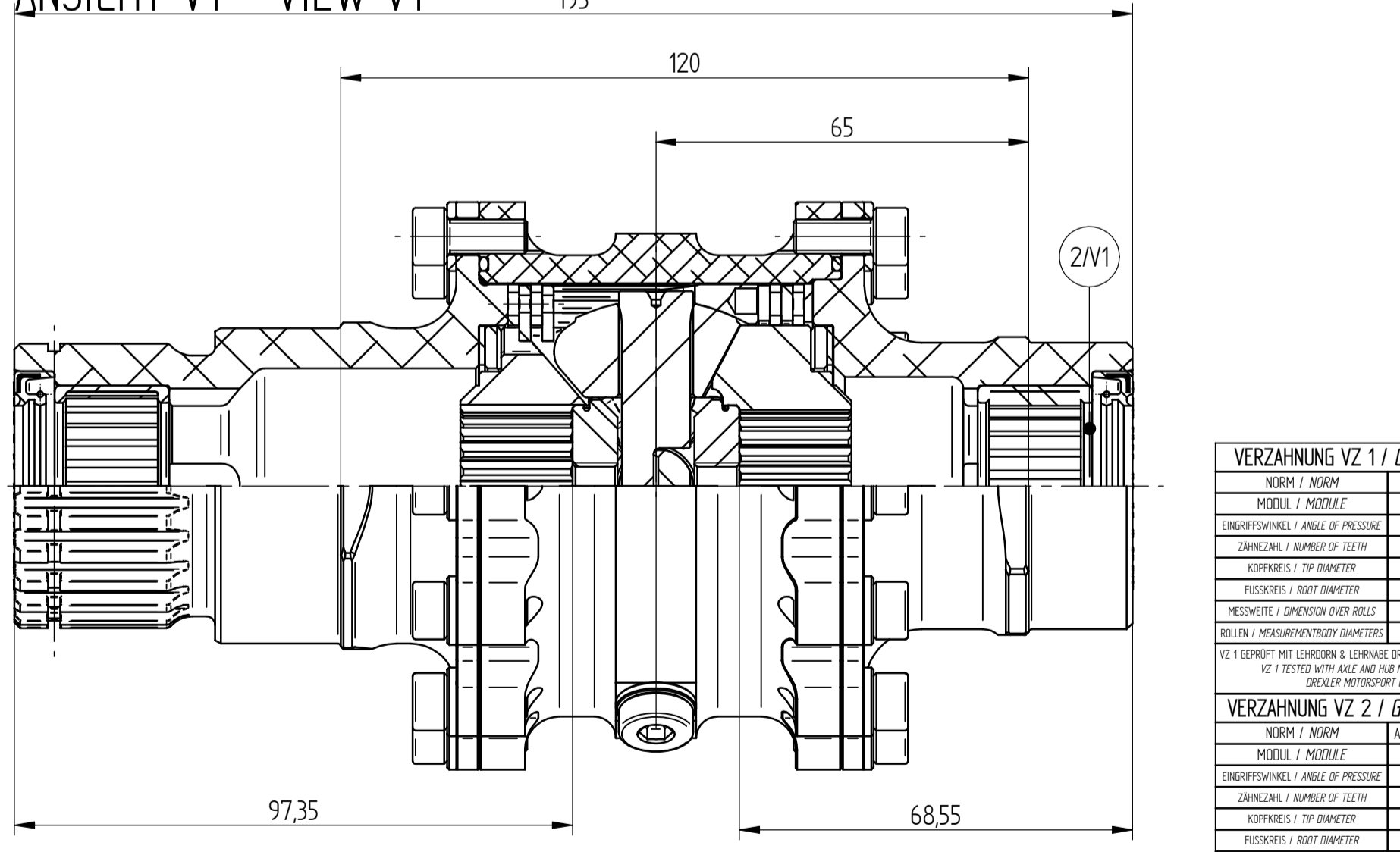
ANSICHT V3 - VIEW V3



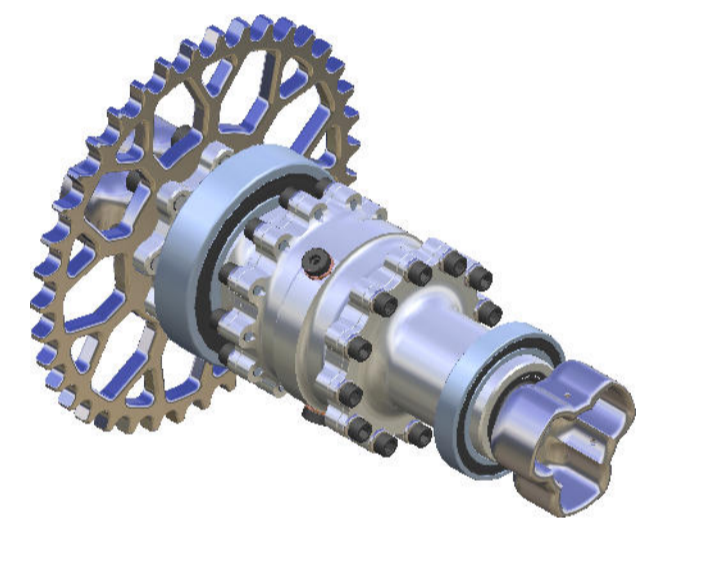
ANSICHT V2 - VIEW V2



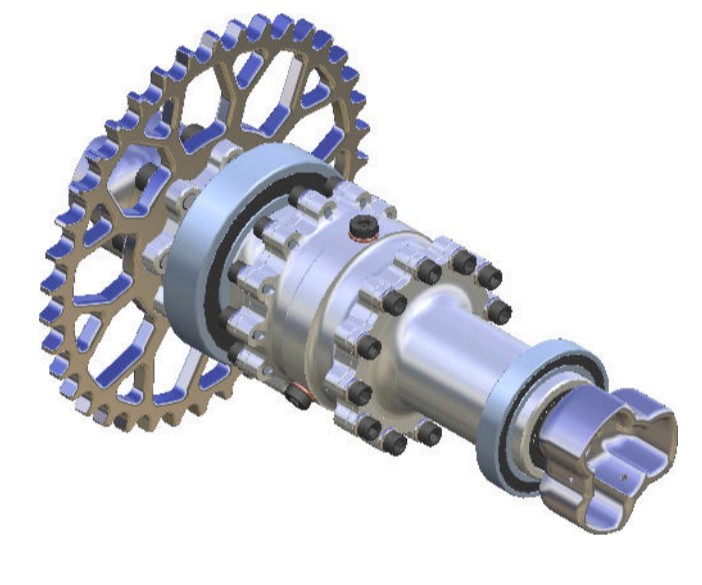
ANSICHT V1 - VIEW V1



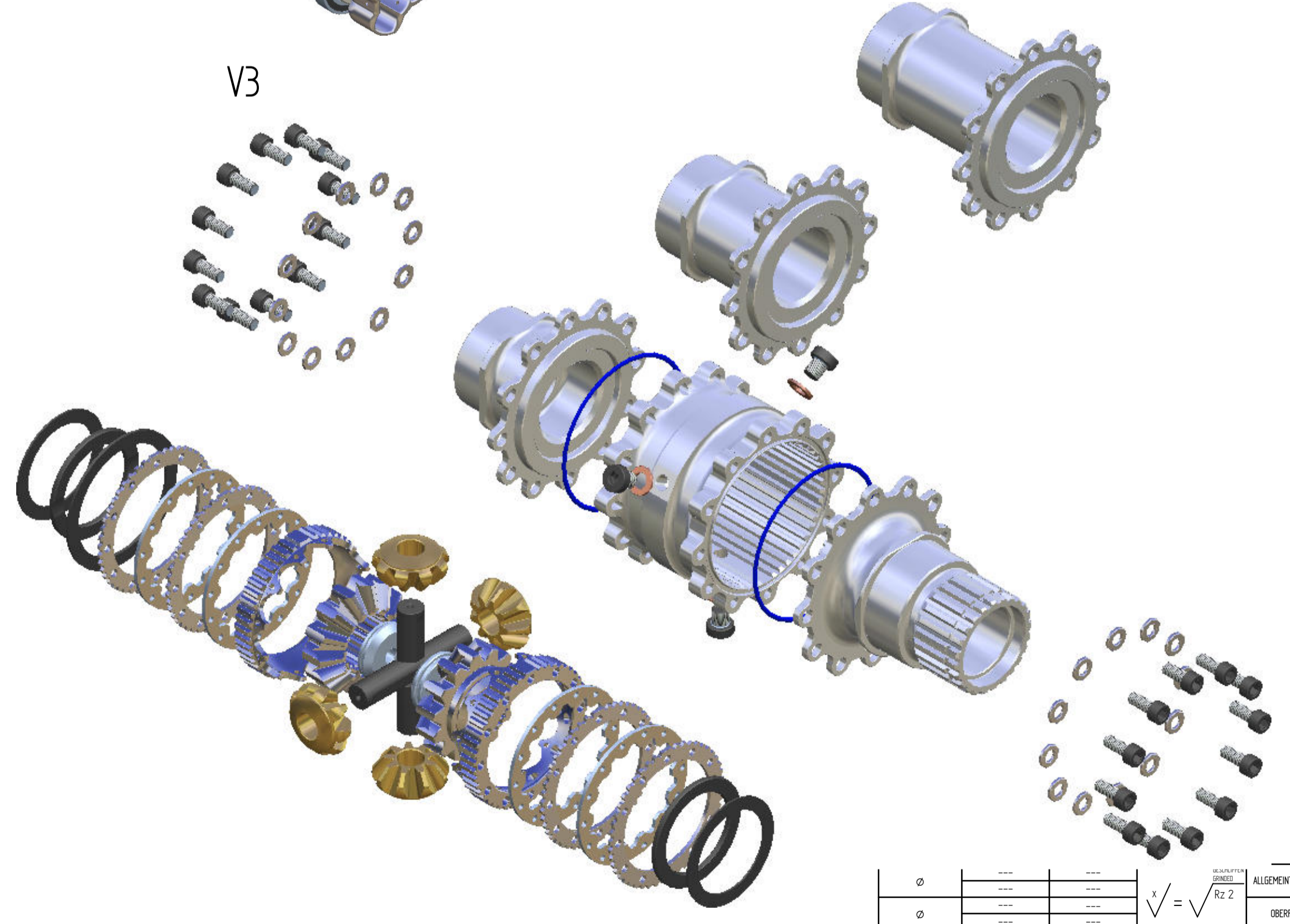
V1



V2



V3



1:2

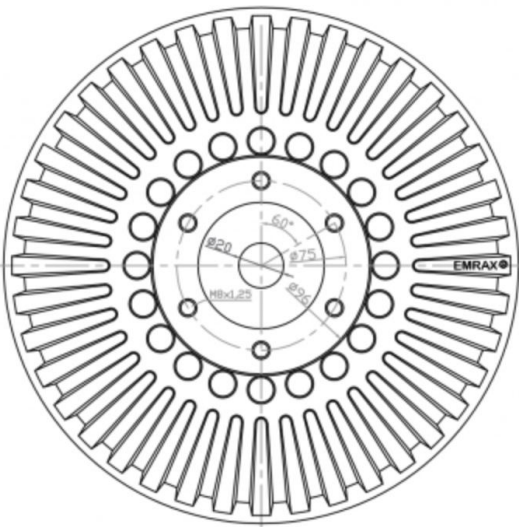
STÜCK / PIECE	BEZEICHNUNG / DESCRIPTION I	STANDARD / REFERENCE	ARTIKELNUMMER / PART NUMBER	ANFANGSSTADIUM / IN STOCK	MATERIAL / MATERIAL	GEWICHT / WEIGHT
26	KUPFER SCHEIBE / COPPER WASHER	---	OSD-100-900-0012	AUF LAGER / IN STOCK	KUPFER / COPPER	0,001 kg
25	ZYLINDERSCHRAUBE / CAP SCREW, SOCKET HEAD	DIN EN ISO 6912 M6 x 1 x 8	OSD-240-900-0010	FERTIGUNG	10.9	0,008 kg
24	O-RING	DIN 3771-75x20-N	OSD-100-900-00024	---	NBR	0,001 kg
23	ZYLINDERSCHRAUBE / CAP SCREW, SOCKET HEAD	DIN EN ISO 4762 M6 x 14	020-001-00596	AUF LAGER / IN STOCK	12.9	0,006 kg
22	FLACHE SCHEIBE / FLAT WASHER	DIN EN ISO 7092 - 6 - 300	OSD-100-900-0011	AUF LAGER / IN STOCK	BLANK, VERZINKT	0,001 kg
21	TRIPPODENLANCH DECKELSEITE / TRIPPOD FLANGE COVERED SIDE	FORMULA STUDENT 2008 - 2009	---	---	---	---
20	TRIPPODENLANCH GEHÄUSESEITE / TRIPPOD FLANGE HOUSING SIDE	FORMULA STUDENT 2008 - 2009	---	---	---	---
19	KETTENRADAPTER ROHUNG / CHAINWHEEL ADAPTER BULLET	FORMULA STUDENT 2008 - 2009	---	---	---	---
18	SICHERUNGSRING / RETAINING RING	DIN 471 - 50 x 2	---	---	---	---
17	RILLENKUGELLAGER / DEEP GROOVE BALL BEARING	DIN 61910-2RS1	---	---	---	---
16	RILLENKUGELLAGER / DEEP GROOVE BALL BEARING	DIN 6211-2RS1	---	---	---	---
15	RADIAL - WELLENDICHTUNG / ROTARY SHAFT SEAL	DIN 3760 - AS 28 x 40 x 7 - NBR	---	---	---	---
14	NIKKELLAGERHÜLSE / NICKEL BEARING	DIN 618-1 INA HK 2820	---	---	---	---
13	ENSCHEIBENKREIS / PLUG	FORMULA STUDENT 2008 - 2009	OSD-240-060-0194	FERTIGUNG / PRODUCTION	D-18	0,035 kg
12	TELLERFEDER ANLAUFSCHEIBE / DISCSPRING FOR THRUST WASHER	DREXLER MOTORSPORT GmbH	OSD-240-080-0102	AUF LAGER / IN STOCK	D-5N	0,008 kg
11	ANLAUFSCHEIBE / THRUST WASHER	DREXLER MOTORSPORT GmbH	OSD-240-090-0101	AUF LAGER / IN STOCK	D-18	0,024 kg
10	TELLERFEDER FÜR VORSpanNUNG 150mm / DISCSPRING PRE-LOAD 150mm	DREXLER MOTORSPORT GmbH	OSD-240-090-0101	AUF LAGER / IN STOCK	D-5N	0,016 kg
9	AUSSENAMELLE 200mm / FRICTION PLATE OUTERSIDED 200mm	DREXLER MOTORSPORT GmbH	OSD-240-300-0109	FERTIGUNG / PRODUCTION	D-CK	0,023 kg
8	INNENAMELLE MELLYBRÄUN BESCHICHTET 200mm / FRICTION PLATE INNERSIDED 200mm	DREXLER MOTORSPORT GmbH	OSD-240-350-0105	FERTIGUNG / PRODUCTION	D-CK	0,022 kg
7	KEGELRIEDEL / BEVELGEAR	DREXLER MOTORSPORT GmbH	OSD-240-070-0410	FERTIGUNG / PRODUCTION	D-18	0,057 kg
6	DIFF-ACHSE / AXLE	DREXLER MOTORSPORT GmbH	OSD-240-020-0102	FERTIGUNG / PRODUCTION	D-18	0,061 kg
5	ACHSREIBKREIS / SIDE BEVEL GEAR	FORMULA STUDENT 2010	OSD-240-000-0141	AUF LAGER / IN STOCK	D-18	0,186 kg
4	DRUCKRING LINKE SEITE / RECHTE SEITE / RAMP LEFT SIDE / RIGHT SIDE	FORMULA STUDENT 2010	OSD-240-040-0140 / OSD-240-040-0141	FERTIGUNG / PRODUCTION	D-18	0,102 kg
3	DIFFERENTIAL GEHÄUSEDECKEL / DIFFERENTIAL BODY COVER	FORMULA STUDENT 2010	OSD-240-700-0005	FERTIGUNG / PRODUCTION	D-AF 53	0,297 kg
2	DIFFERENTIAL BECKEL VERSION V1 / V2 / V3 / DIFFERENTIAL COVER V1 / V2 / V3	FORMULA STUDENT 2010	030-240-700-0006 / 0007 / 0008	FERTIGUNG / PRODUCTION	D-AF 53	V1: 0,278 kg V2: 0,271 kg V3: 0,319 kg
1	DIFFERENTIAL GEHÄUSE / DIFFERENTIAL BODY	FORMULA STUDENT 2010	OSD-240-600-0006	FERTIGUNG / PRODUCTION	D-AF 53	0,268 kg

TEIL WIRD VON DREXLER MOTORSPORT GmbH BEARBEITET (VERZÄHNUNG) GESTELLT --- FERTIGSTELLUNG DURCH HOCHSCHULEN  
 THE PART WILL BE DELIVERED IN MACHINED STATE BY DREXLER MOTORSPORT GmbH --- THE FINISHED MACHINING WILL BE DONE BY THE CUSTOMERS!  
 TEILE WERDEN VON DEN HOCHSCHULEN GEWÄHLT UND GESTELLT!  
 THE PARTS WILL BE ORGANISED BY THE CUSTOMERS!

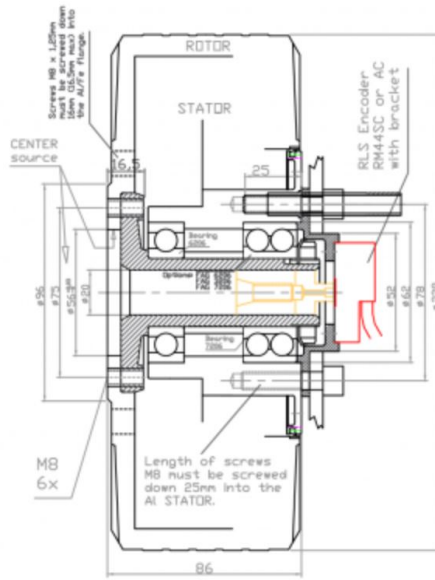
TOLERANZ / TOLERANCE		WÄRMEBEHANDLUNG / HEAT TREATMENT		OBERFLÄCHENBEHANDLUNG / SURFACE FINISH		MASSSTAB / SCALE		DIN		BEARBEITET / MODIFIED		DATUM / DATE		STAND / REV		ÄNDERUNGEN / REVISION RECORD	
Ø	± 0.030	---	---	---	---	1:1	A2	---	---	---	---	---	---	---	---	---	---
Ø	± 0.011	---	---	---	---	---	---	---	---	---	---	---	---	---	---	---	---
Ø	± 0.030	---	---	---	---	---	---	---	---	---	---	---	---	---	---	---	---
Ø	± 0.011	---	---	---	---	---	---	---	---	---	---	---	---	---	---	---	---
Ø 55 m6	± 0.030	---	---	---	---	---	---	---	---	---	---	---	---	---	---	---	---
Ø 50 m6	± 0.030	---	---	---	---	---	---	---	---	---	---	---	---	---	---	---	---
PASSPASS / FIT SIZE	± 0.011	---	---	---	---	---	---	---	---	---	---	---	---	---	---	---	---
AMHWS / ALLOWANCE	---	---	---	---	---	---	---	---	---	---	---	---	---	---	---	---	---
MIN - MAX MASS	---	---	---	---	---	---	---	---	---	---	---	---	---	---	---	---	---
MIN - MAX MEASURE	---	---	---	---	---	---	---	---	---	---	---	---	---	---	---	---	---
WERTSTÜCKKANTEN / WORK EDGE QUALITY		WERTSTÜCKKANTEN / WORK EDGE QUALITY		WERTSTÜCKKANTEN / WORK EDGE QUALITY		WERTSTÜCKKANTEN / WORK EDGE QUALITY		WERTSTÜCKKANTEN / WORK EDGE QUALITY		WERTSTÜCKKANTEN / WORK EDGE QUALITY		WERTSTÜCKKANTEN / WORK EDGE QUALITY		WERTSTÜCKKANTEN / WORK EDGE QUALITY		WERTSTÜCKKANTEN / WORK EDGE QUALITY	
DIN ISO 13715		DIN ISO 13715		DIN ISO 13715		DIN ISO 13715		DIN ISO 13715		DIN ISO 13715		DIN ISO 13715		DIN ISO 13715		DIN ISO 13715	
WÄRMEBEHANDLUNG / HEAT TREATMENT		WÄRMEBEHANDLUNG / HEAT TREATMENT		WÄRMEBEHANDLUNG / HEAT TREATMENT		WÄRMEBEHANDLUNG / HEAT TREATMENT		WÄRMEBEHANDLUNG / HEAT TREATMENT		WÄRMEBEHANDLUNG / HEAT TREATMENT		WÄRMEBEHANDLUNG / HEAT TREATMENT		WÄRMEBEHANDLUNG / HEAT TREATMENT		WÄRMEBEHANDLUNG / HEAT TREATMENT	
Diverse		Diverse		Diverse		Diverse		Diverse		Diverse		Diverse		Diverse		Diverse	
SONSTIGE ANGABEN / OTHER DATA		SONSTIGE ANGABEN / OTHER DATA		SONSTIGE ANGABEN / OTHER DATA		SONSTIGE ANGABEN / OTHER DATA		SONSTIGE ANGABEN / OTHER DATA		SONSTIGE ANGABEN / OTHER DATA		SONSTIGE ANGABEN / OTHER DATA		SONSTIGE ANGABEN / OTHER DATA		SONSTIGE ANGABEN / OTHER DATA	
---		---		---		---		---		---		---		---		---	
ZEICHNUNG NUR FÜR DENCKEN KAPITÄL UND KUNDENRECHNUNG. KEINE VERWENDUNG FÜR ANDERE ZWECKE. KEINE VERWENDUNG FÜR ANDERE ZWECKE. KEINE VERWENDUNG FÜR ANDERE ZWECKE. DRAWING ONLY FOR THINKING CAPITAL AND CUSTOMER ACCOUNT. NO USE FOR OTHER PURPOSES. NO USE FOR OTHER PURPOSES. NO USE FOR OTHER PURPOSES.		DREXLER MOTORSPORT		DREXLER MOTORSPORT		DREXLER MOTORSPORT		DREXLER MOTORSPORT		DREXLER MOTORSPORT		DREXLER MOTORSPORT		DREXLER MOTORSPORT		DREXLER MOTORSPORT	
BENENNUNG 1 / DESCRIPTION 1		BENENNUNG 1 / DESCRIPTION 1		BENENNUNG 1 / DESCRIPTION 1		BENENNUNG 1 / DESCRIPTION 1		BENENNUNG 1 / DESCRIPTION 1		BENENNUNG 1 / DESCRIPTION 1		BENENNUNG 1 / DESCRIPTION 1		BENENNUNG 1 / DESCRIPTION 1		BENENNUNG 1 / DESCRIPTION 1	
DIFFERENTIAL ZUSAMMENBAU / DIFFERENTIAL ASSEMBLY		DIFFERENTIAL ZUSAMMENBAU / DIFFERENTIAL ASSEMBLY		DIFFERENTIAL ZUSAMMENBAU / DIFFERENTIAL ASSEMBLY		DIFFERENTIAL ZUSAMMENBAU / DIFFERENTIAL ASSEMBLY		DIFFERENTIAL ZUSAMMENBAU / DIFFERENTIAL ASSEMBLY		DIFFERENTIAL ZUSAMMENBAU / DIFFERENTIAL ASSEMBLY		DIFFERENTIAL ZUSAMMENBAU / DIFFERENTIAL ASSEMBLY		DIFFERENTIAL ZUSAMMENBAU / DIFFERENTIAL ASSEMBLY		DIFFERENTIAL ZUSAMMENBAU / DIFFERENTIAL ASSEMBLY	
BENENNUNG 2 / DESCRIPTION 2		BENENNUNG 2 / DESCRIPTION 2		BENENNUNG 2 / DESCRIPTION 2		BENENNUNG 2 / DESCRIPTION 2		BENENNUNG 2 / DESCRIPTION 2		BENENNUNG 2 / DESCRIPTION 2		BENENNUNG 2 / DESCRIPTION 2		BENENNUNG 2 / DESCRIPTION 2		BENENNUNG 2 / DESCRIPTION 2	
FORMULA STUDENT 2010		FORMULA STUDENT 2010		FORMULA STUDENT 2010		FORMULA STUDENT 2010		FORMULA STUDENT 2010		FORMULA STUDENT 2010		FORMULA STUDENT 2010		FORMULA STUDENT 2010		FORMULA STUDENT 2010	
SWI		SWI		SWI		SWI		SWI		SWI		SWI		SWI		SWI	
09-11-05		09-11-05		09-11-05		09-11-05		09-11-05		09-11-05		09-11-05		09-11-05		09-11-05	
A		A		A		A		A		A		A		A		A	

DREXLER MOTORSPORT GmbH KONSTRUKTION/AUTODRAWING / HEFTSTELLER UND MOTORSPORT TEAM/FORMULA STUDENT/FORMULA STUDENT 2010/01/drafts





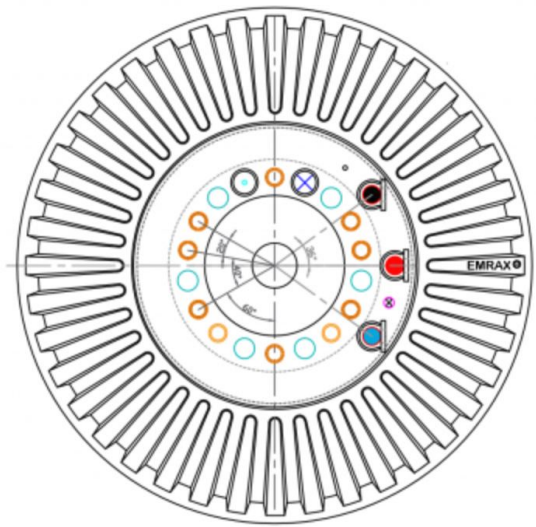
FRONT VIEW



M8  
6x

Length of screws  
M8 must be screwed  
down 25mm into the  
Al STATOR.

86

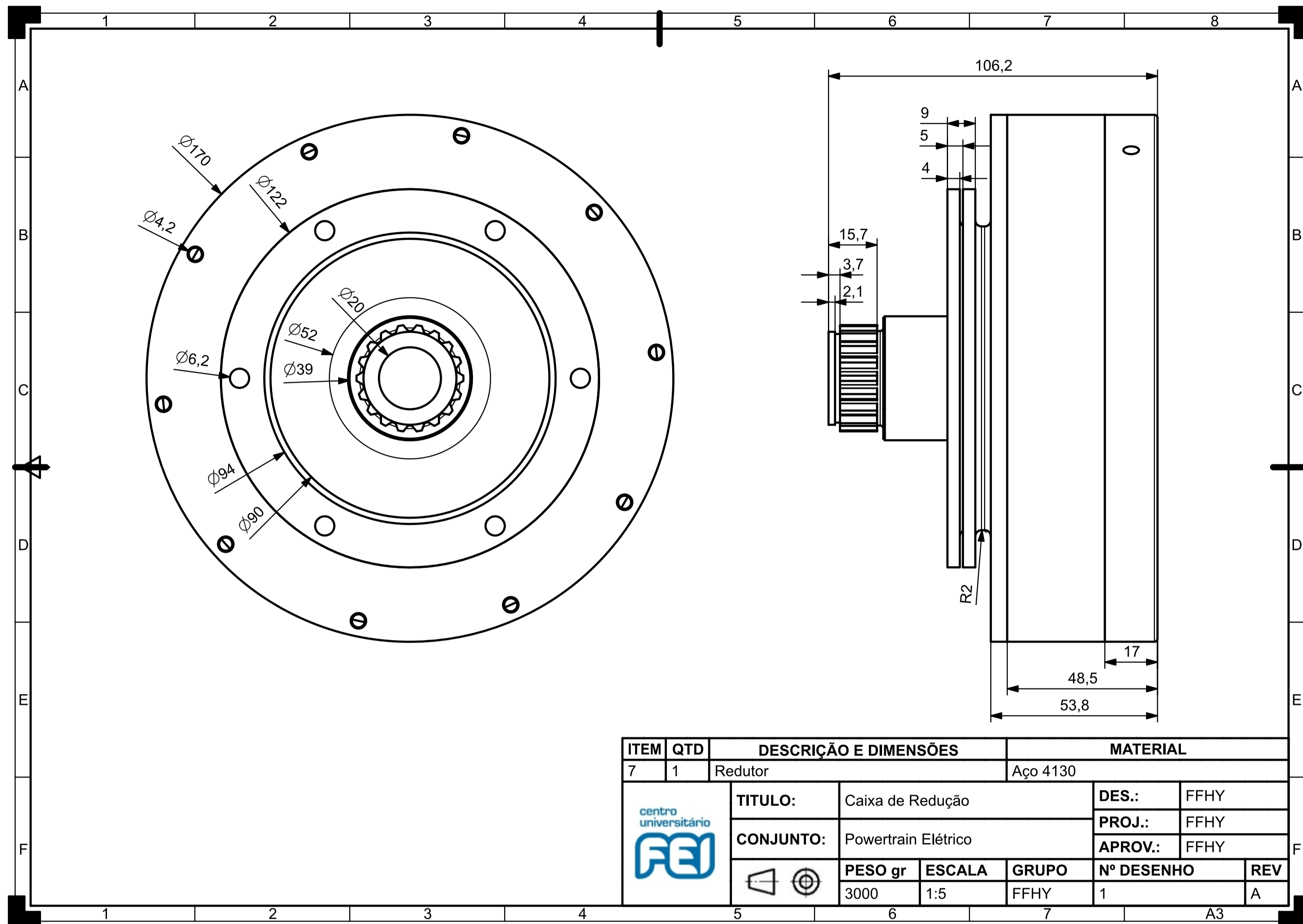


BACK VIEW

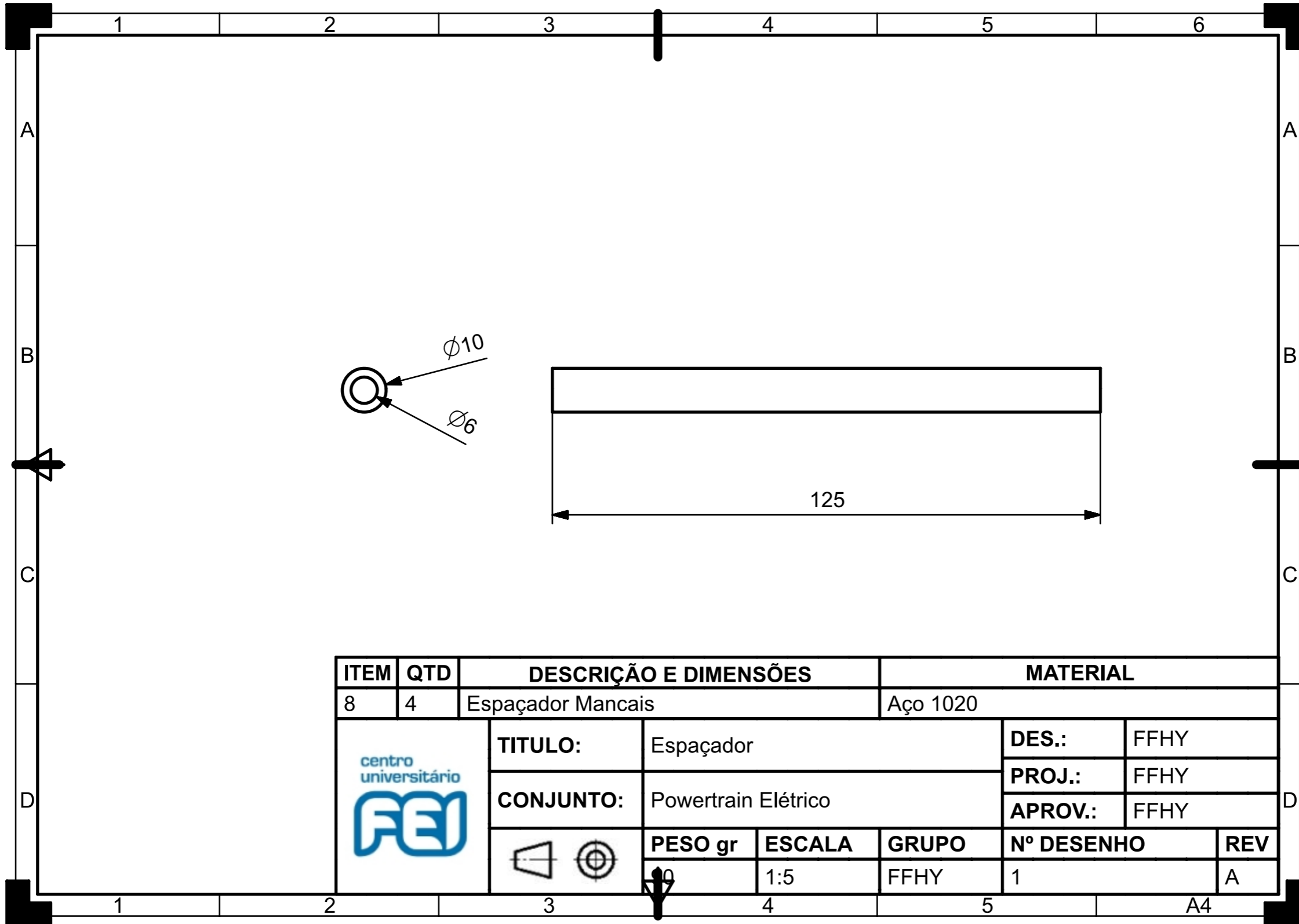
Bearings 6206-2RS6 - Front and back bearing are for radial forces (standard)  
 Bearings 6206-2RS6 - Front bearing is for radial forces, back bearing is for axial-radial forces. Bearing combination is for pull mode (for e.g. air propeller).  
 Bearings 6206-32RS6 - Front bearing is for radial forces, back bearing is for axial-radial forces. Bearing combination is for pull-push mode.

## EMRAX 228

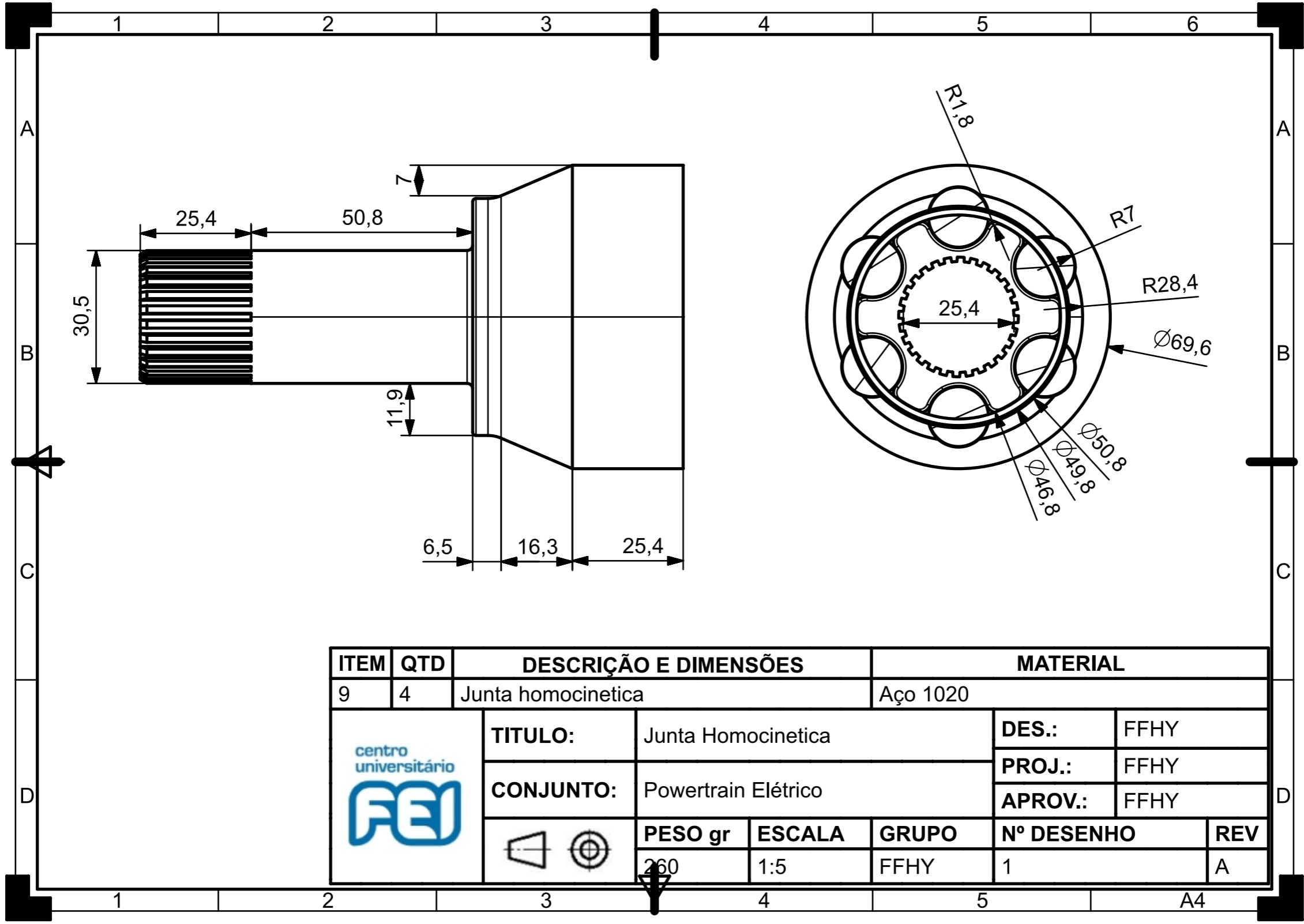
240 Nm 100kW at 5500 RPM, weight: 12,5kg





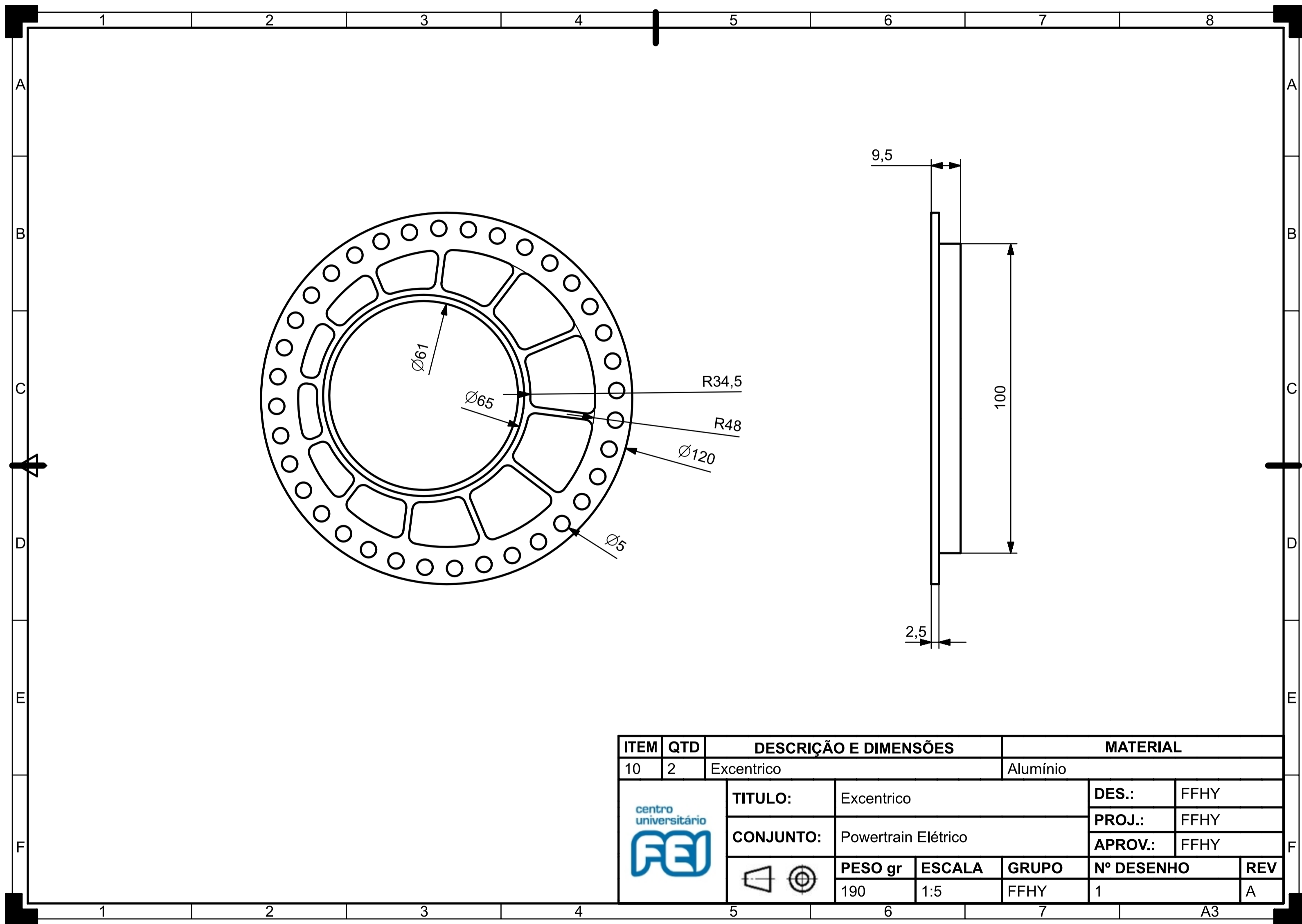
ITEM	QTD	DESCRIÇÃO E DIMENSÕES	MATERIAL			
7	1	Redutor	Aço 4130			
		TITULO:	Caixa de Redução	DES.:	FFHY	
		CONJUNTO:	Powertrain Elétrico	PROJ.:	FFHY	
		PESO gr	ESCALA	GRUPO	Nº DESENHO	REV
		3000	1:5	FFHY	1	A




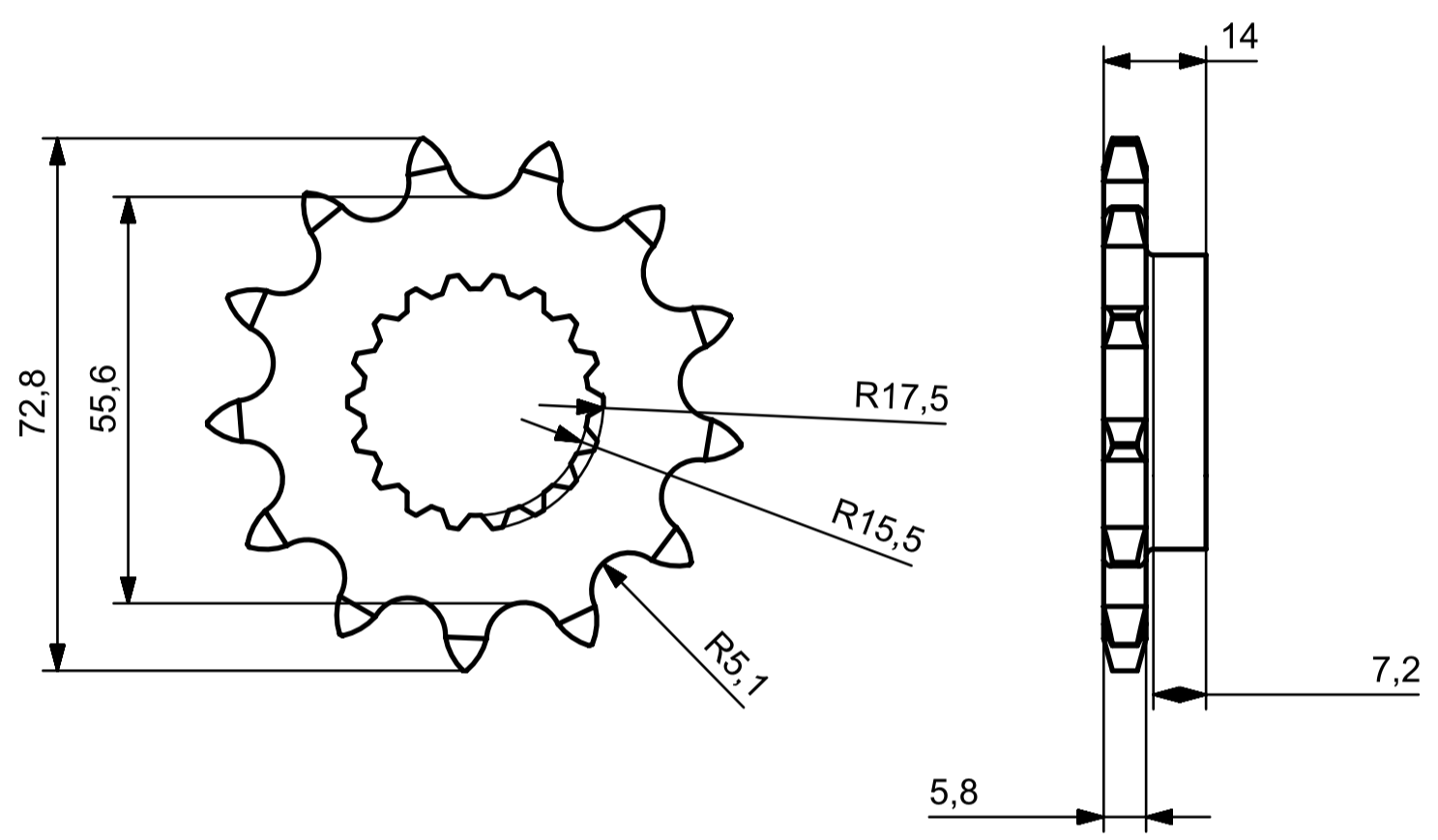






ITEM	QTD	DESCRIÇÃO E DIMENSÕES	MATERIAL				
9	4	Junta homocinética	Aço 1020				
	TÍTULO:		Junta Homocinética		DES.:	FFHY	
	CONJUNTO:		Powertrain Elétrico		PROJ.:	FFHY	
			PESO gr	ESCALA	GRUPO	Nº DESENHO	REV
			260	1:5	FFHY	1	A



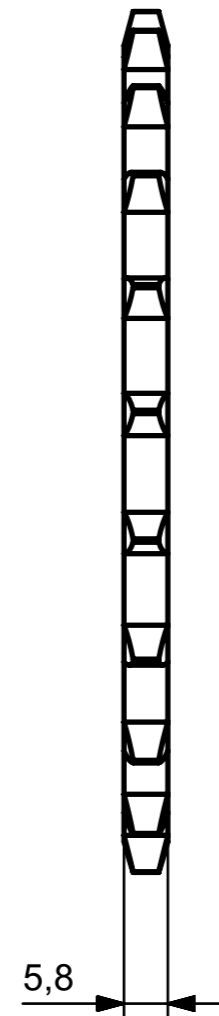
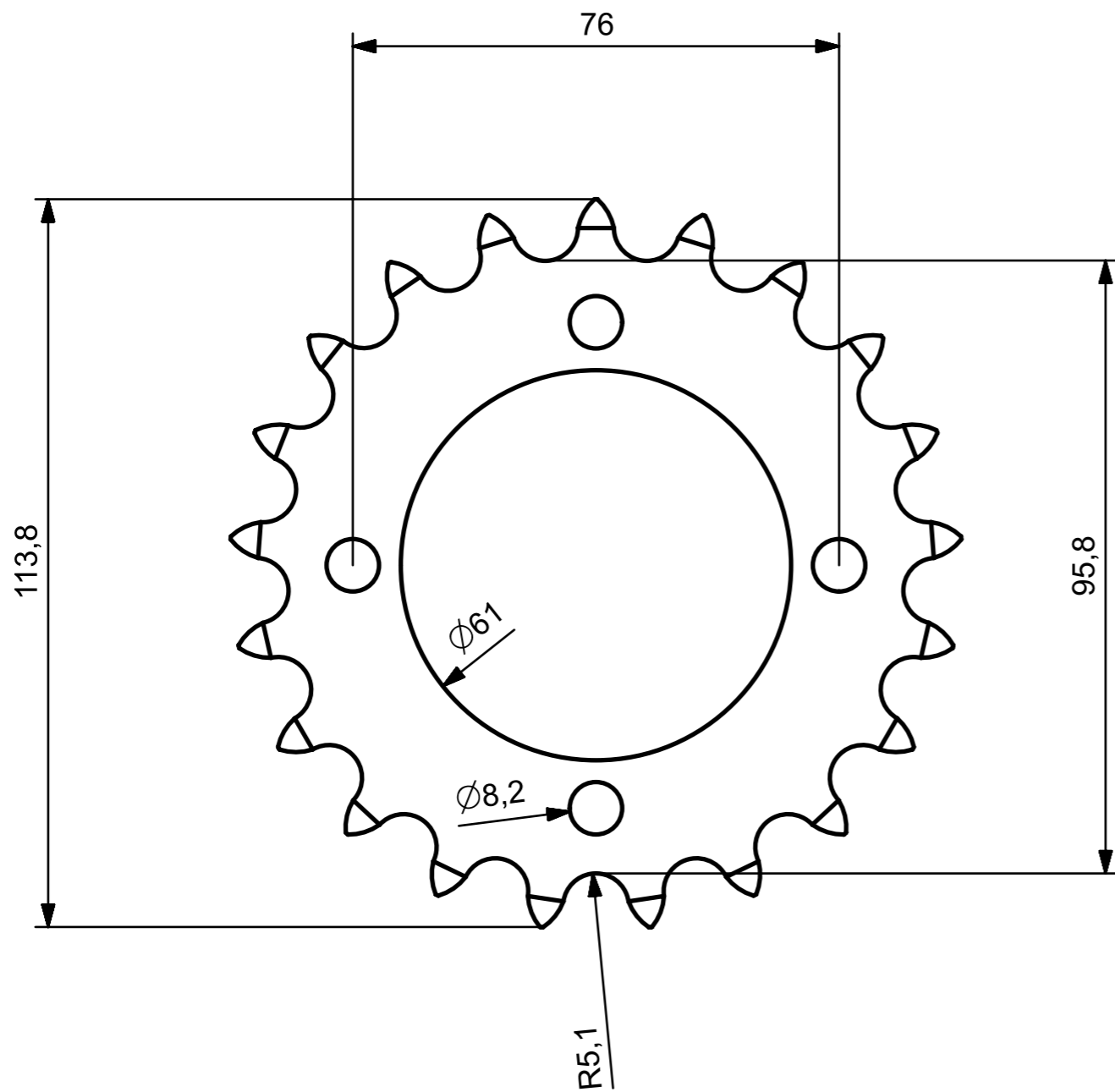
ITEM	QTD	DESCRIÇÃO E DIMENSÕES	MATERIAL			
10	2	Excentrico	Alumínio			
	TITULO:		Excentrico		DES.:	FFHY
	CONJUNTO:		Powertrain Elétrico		PROJ.:	FFHY
					APROV.:	FFHY
		PESO gr	ESCALA	GRUPO	Nº DESENHO	REV
	190	1:5	FFHY	1	A	




ITEM	QTD	DESCRIÇÃO E DIMENSÕES	MATERIAL				
11	1	Pinhão Elétrico	Aço 1020				
	TITULO:		Pinhão		DES.:	FFHY	
	CONJUNTO:		Powertrain Elétrico		PROJ.:	FFHY	
					APROV.:	FFHY	
			PESO gr	ESCALA	GRUPO	Nº DESENHO	REV
			260	1:5	FFHY	1	A

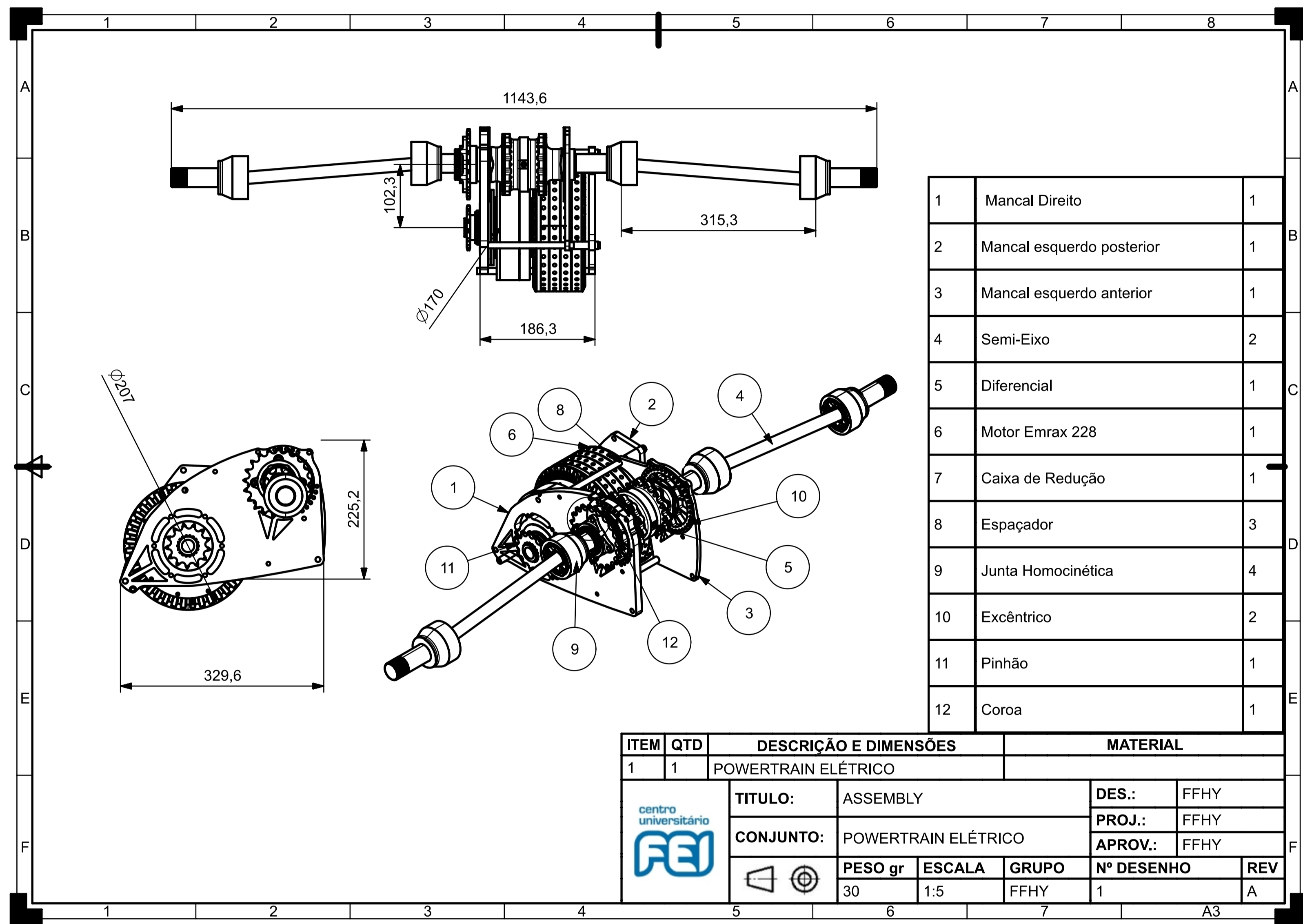
A3

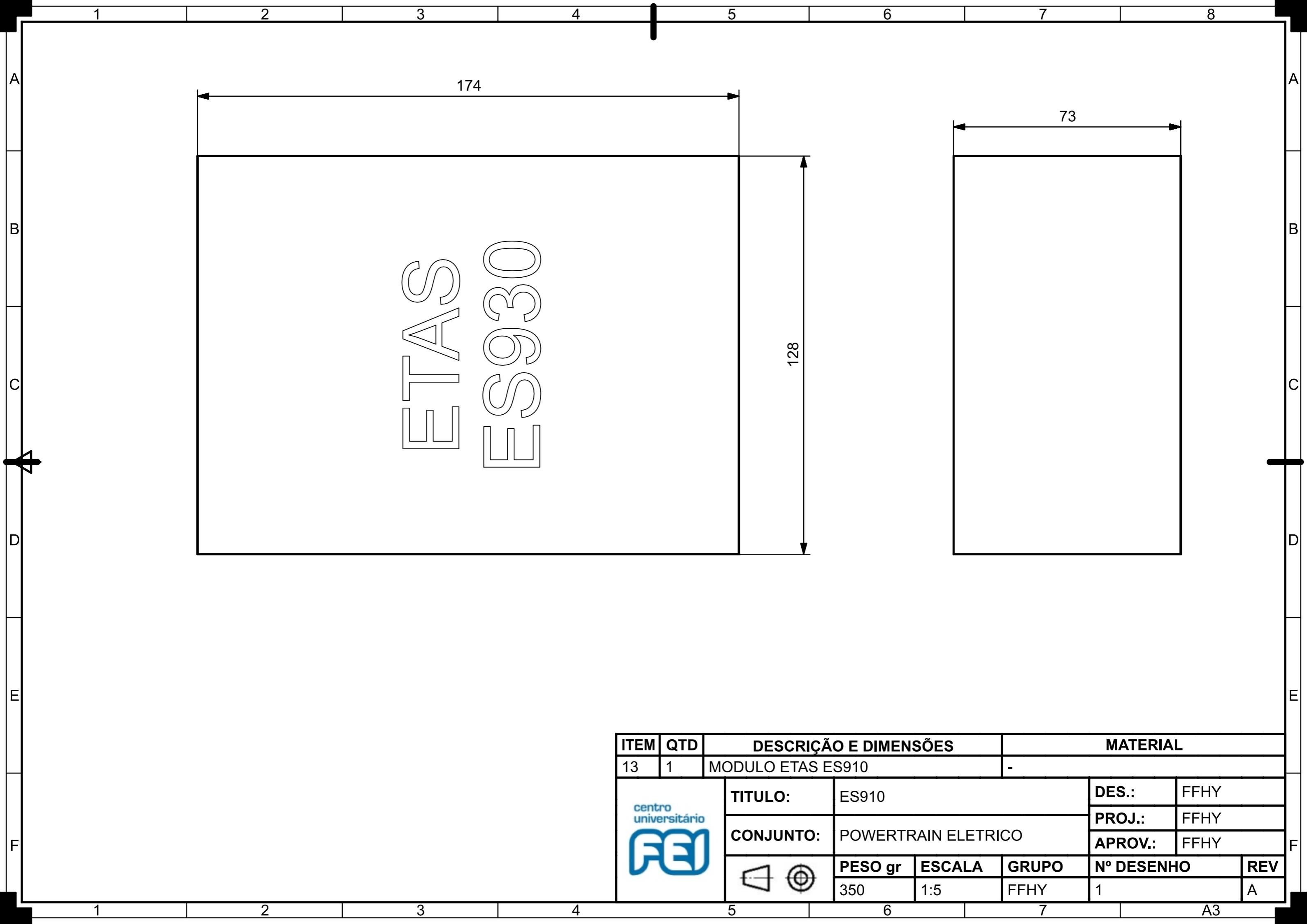




ITEM	QTD	DESCRIÇÃO E DIMENSÕES	MATERIAL			
12	1	Coroa elétrico	Aço 1020			
	TITULO:	Coroa	DES.:	FFHY		
	CONJUNTO:	Powertrain Elétrico	PROJ.:	FFHY		
			APROV.:	FFHY		
		PESO gr	ESCALA	GRUPO	Nº DESENHO	REV
		350	1:5	FFHY	1	A

A  
B  
C  
D  
E  
F





ETAS  
ES930

ITEM	QTD	DESCRIÇÃO E DIMENSÕES	MATERIAL			
13	1	MODULO ETAS ES910	-			
	TITULO:	ES910		DES.:	FFHY	
	CONJUNTO:	POWERTRAIN ELETRICO		PROJ.:	FFHY	
	 	PESO gr	ESCALA	GRUPO	Nº DESENHO	REV
		350	1:5	FFHY	1	A



# RINEHART MOTION SYSTEMS PM100DX\_DZ\_DXR DIMENSIONS

